

3D Revit Modeling and Shop Drawing of Armagam



Project Highpoints

- Project Synopsis:**
- Revit Modeling
 - Shop Drawings
 - CAD to BIM

Project Objective: Tesla Outsourcing Services was required to develop a 3D Revit model in LOD 350 for an Academic Institution in the USA.

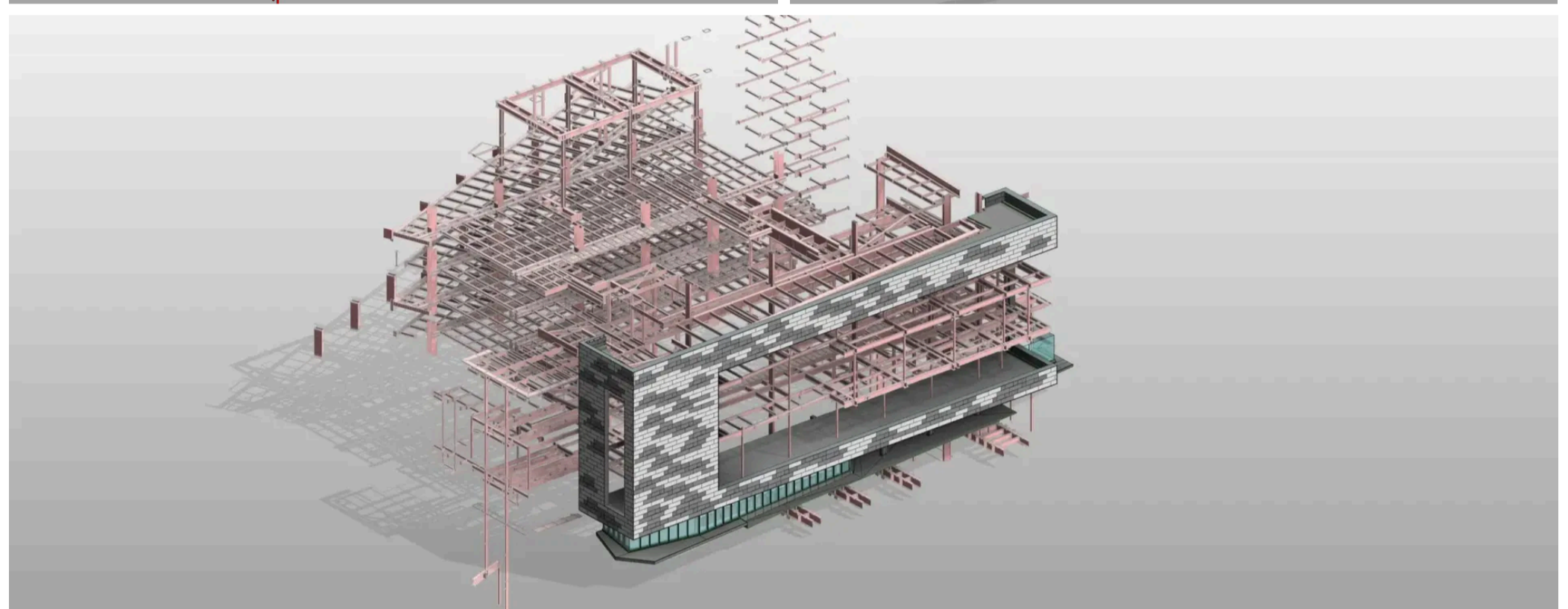
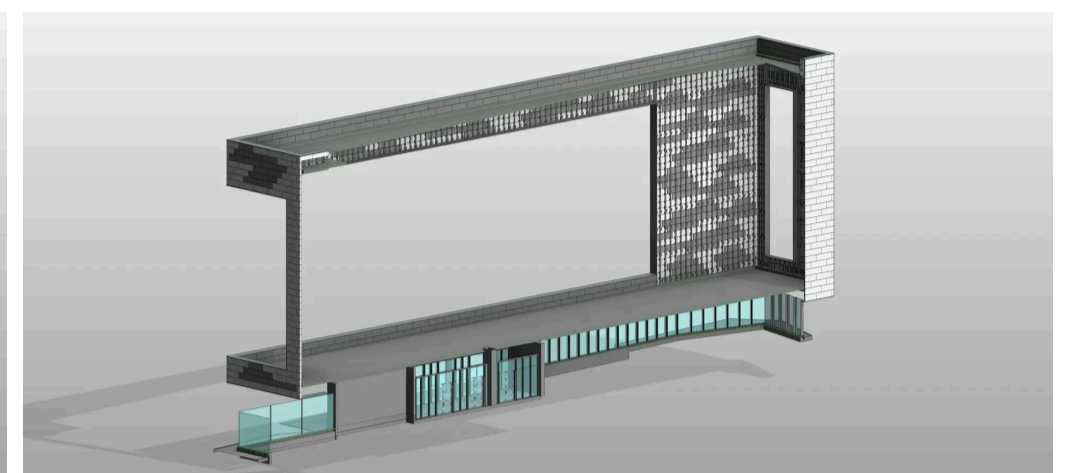
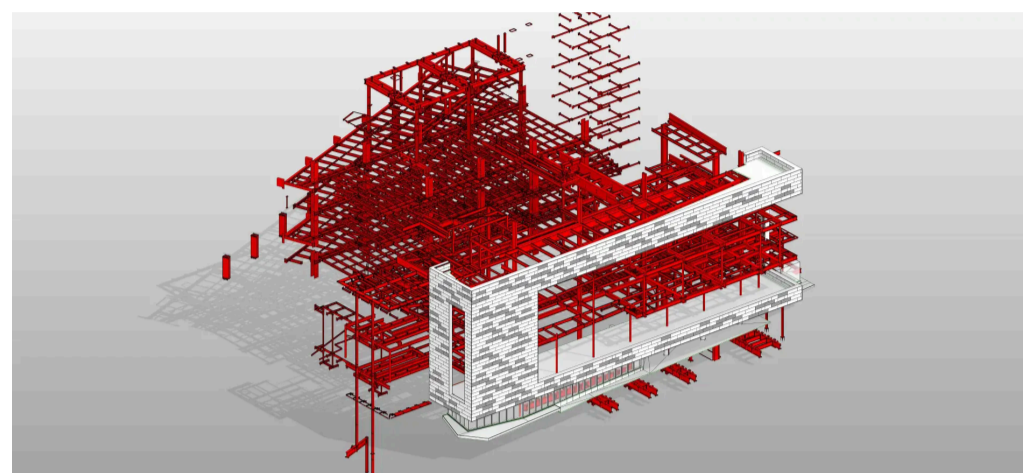
Client Summary: The client for which we executed this project is a renowned commercial stone contractor company based in the USA.

- Project Deliverables:**
- Architectural and Structural Revit model (.rvt file)
 - Shop Drawings (DWG/PDF format)

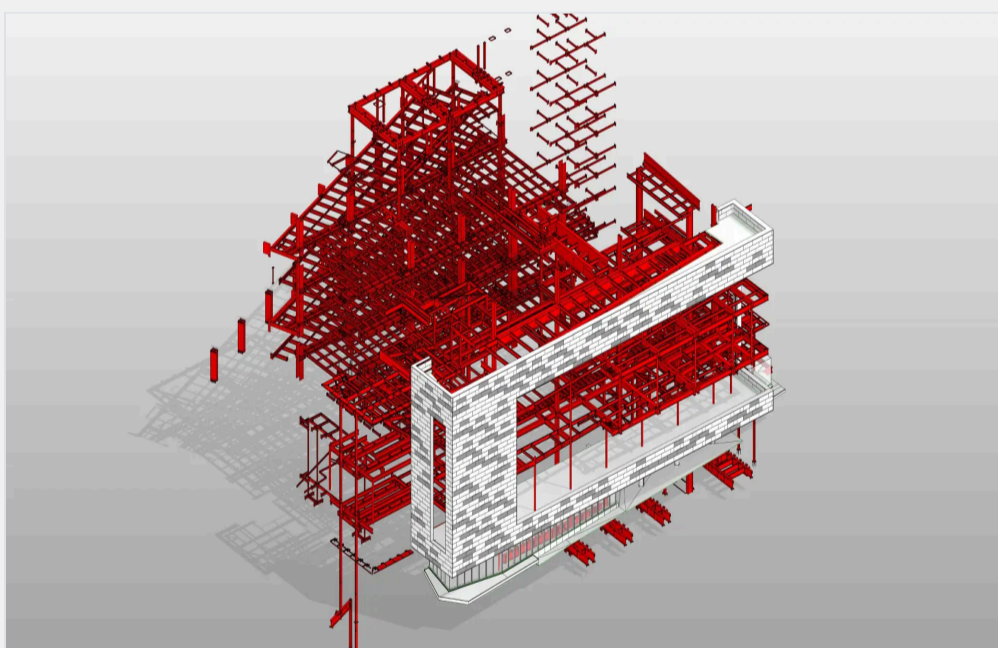
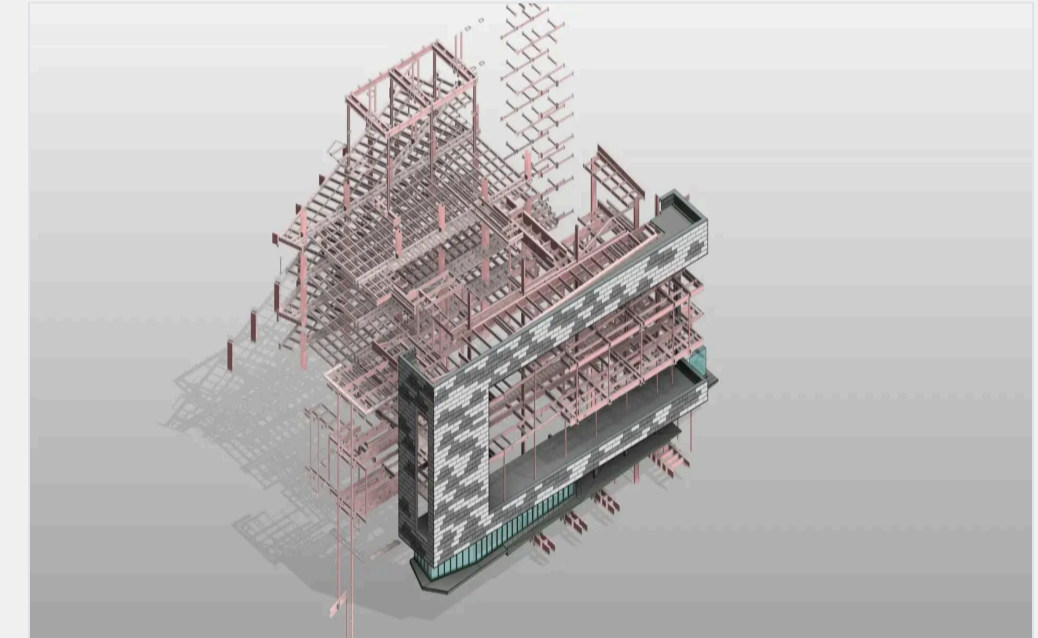
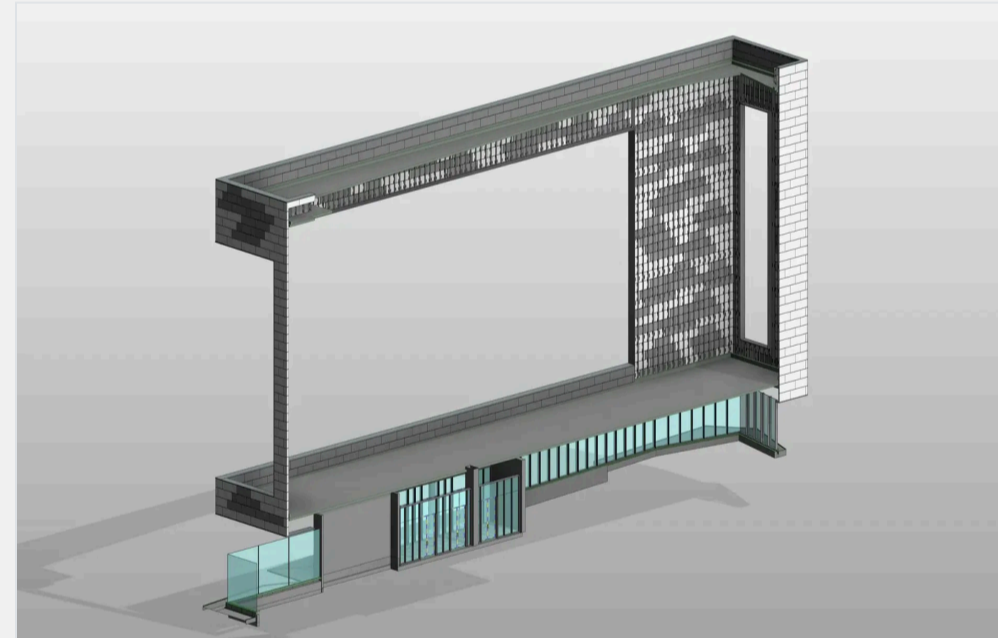
Project Summary

This project is a renovation of an existing museum to an academic building in LOD 350. Our scope of work included front façade, complete structural 3D Modelling, and 2D documentation sheets from the 3D models

- Disciplines: Architectural and Structure
- Type of Building: Academic Institution
- Type of Project: 3D Revit Modeling
- Façade Area: 1800 sq. ft.
- BIM LOD: 350
- Units of measurement: Imperial (feet-inches)
- Revit Version: Revit



Project Gallery



We Serve Globally

- | | | | |
|------------|-------------|-----------------|----------------|
| Australia | Norway | USA | • Minnesota |
| Austria | Poland | • California | • Nevada |
| Belgium | Portugal | • Colorado | • New Jersey |
| Denmark | Spain | • Connecticut | • New York |
| France | Sweden | • Florida | • Oregon |
| Germany | Switzerland | • Georgia | • Pennsylvania |
| Ireland | UK | • Illinois | • Tennessee |
| Italy | Canada | • Louisiana | • Texas |
| Netherland | Mexico | • Massachusetts | • Utah |