

Architectural BIM Modeling for Glenfern



Project Details	
Project Name:	Glenfern
Project Type:	Architectural BIM Modeling
Type of Building:	Residential Units
No. of House Types:	13 Different Designs
Software:	Revit
LOD:	350
Turnaround Time:	16 days



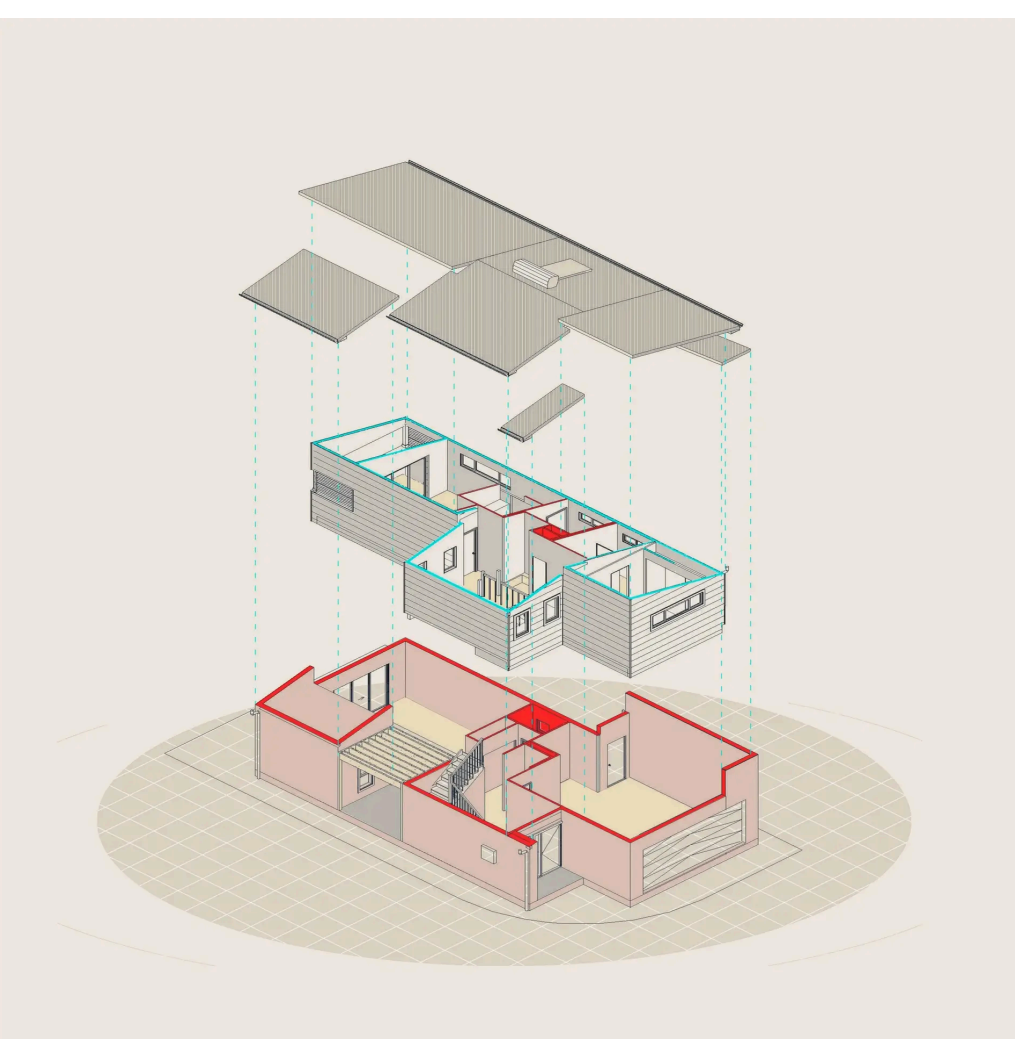
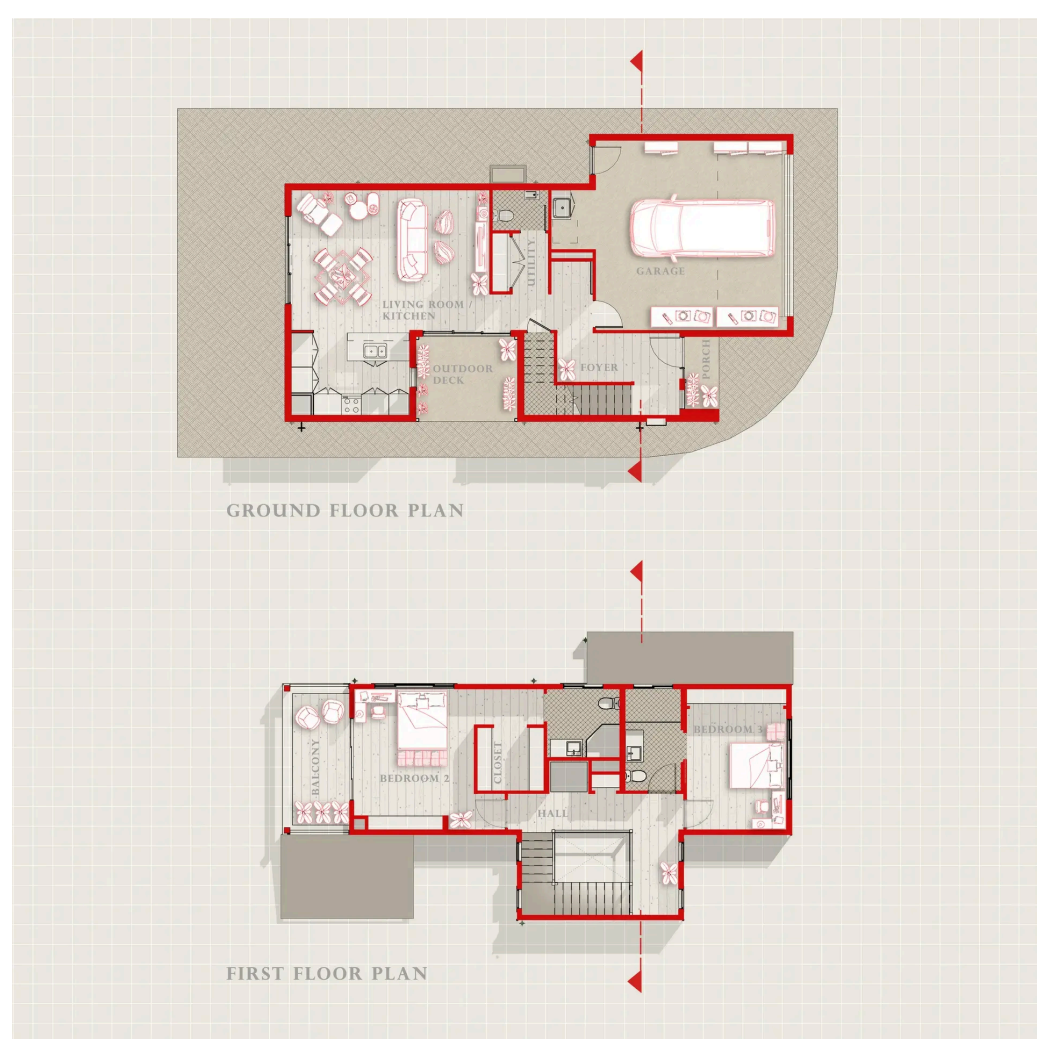
Architectural BIM Modeling for 13 Housetypes at LOD 350

This project, located in Australia, involved transforming 2D design drafts into comprehensive, informative 3D models that were then instrumental in developing the final construction drawings.

Our team efficiently completed **Architectural 3D modeling** for 13 residential units in approximately 15 to 16 days. This involved achieving LOD 350 with accurate master modeling for each unit. We effectively utilized design options to manage the various facade designs and meticulously added relevant information, seamlessly transitioning the models from the "Design" stage to the "For Construction" stage.

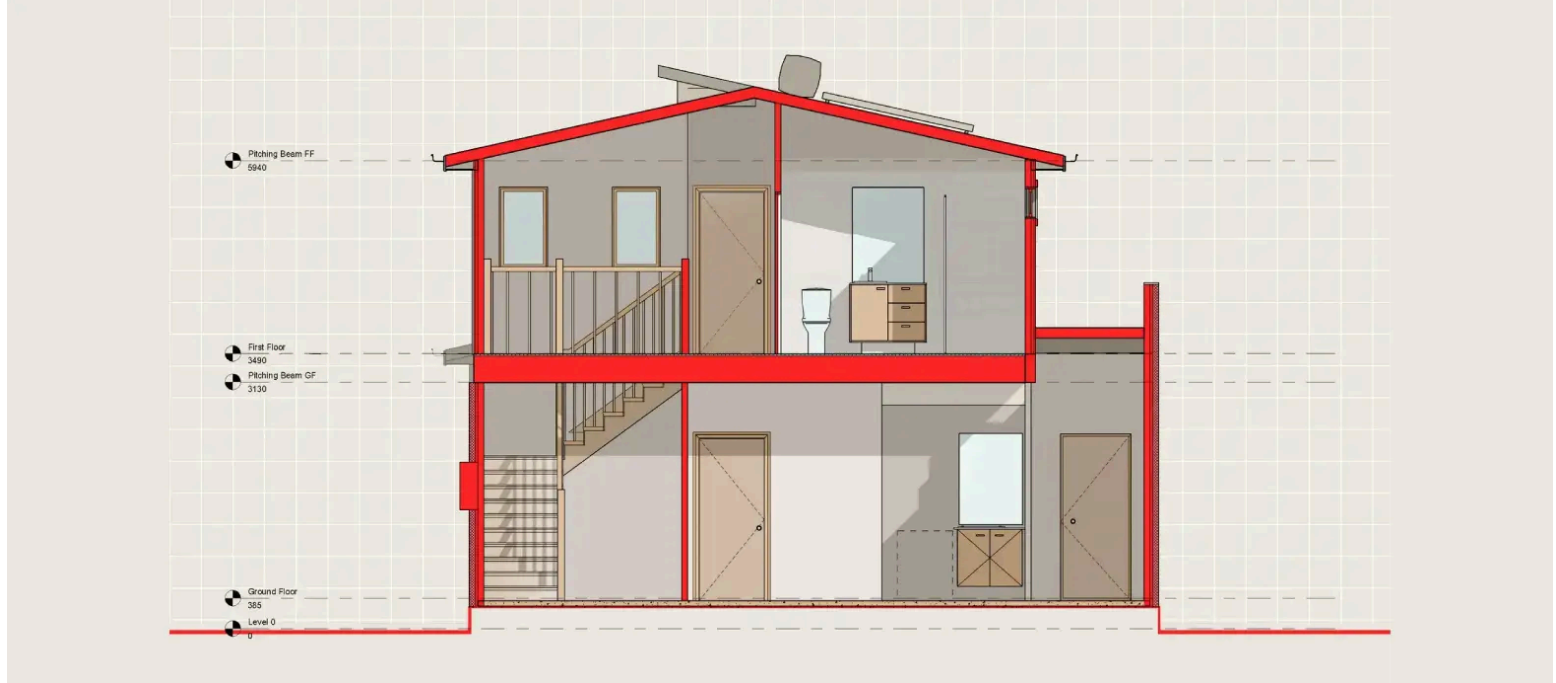
Model Contents

Modeled Site, columns, walls, doors, windows, roof & roof elements, floor, stairs, railing, ceilings, bulkheads, openings, kitchen equipment, sanitary fixtures, façade details (walls sweeps, window trims, etc.) and material specs (where visible) for 13 designs.

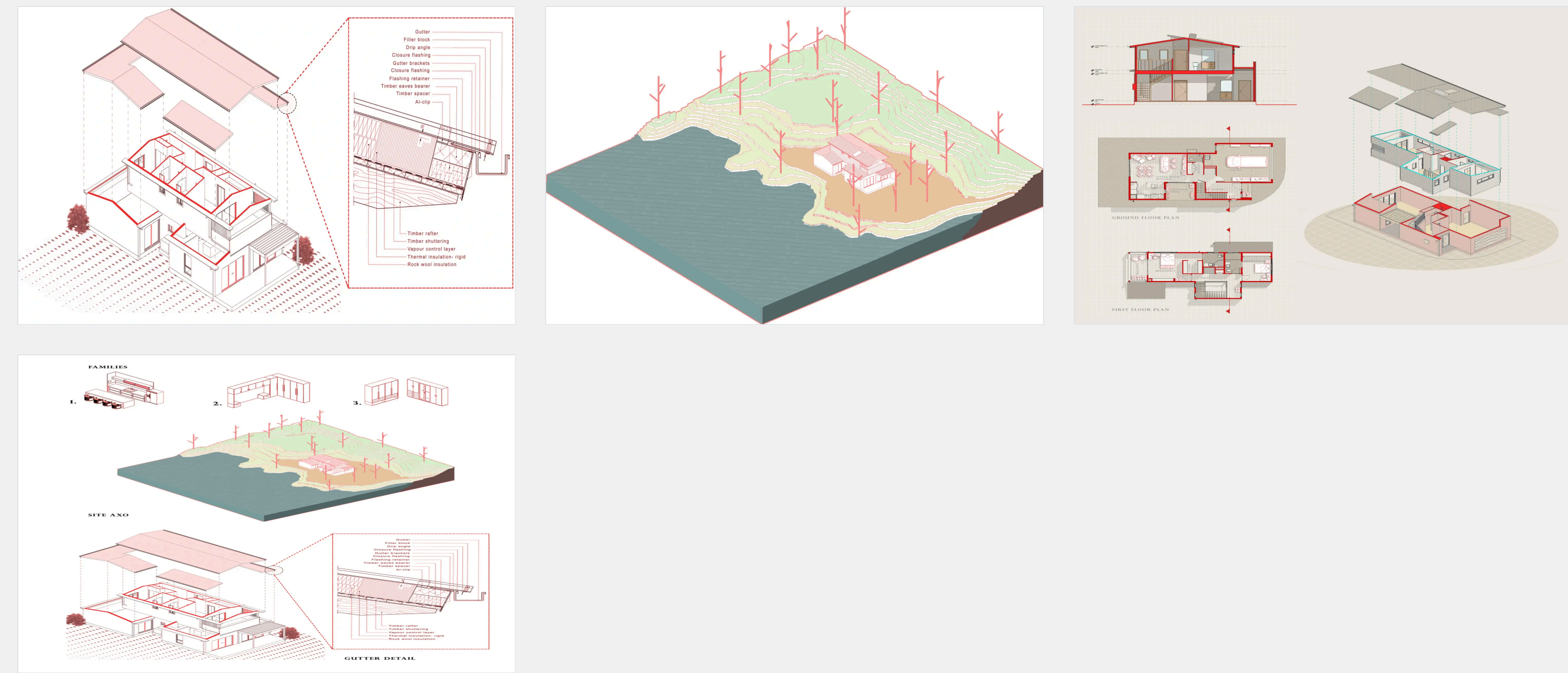


Accuracy Assurance

01. Tolerance Standards: Maintained throughout the entire model
02. Level of Accuracy between point cloud and Revit model: +/-15mm
03. Level of accuracy 1" from scan (i.e., the walls and floors having undulations in scan of up to 1" modelled orthogonal/straight).



Project Gallery



We Serve Globally

- Australia
- Austria
- Belgium
- Denmark
- France
- Germany
- Ireland
- Italy
- Netherlands
- Norway
- Poland
- Portugal
- Spain
- Sweden
- Switzerland
- UK
- Canada
- Mexico
- USA
 - California
 - Colorado
 - Connecticut
 - Florida
 - Georgia
 - Illinois
 - Louisiana
 - Massachusetts
 - Minnesota
 - Nevada
 - New Jersey
 - New York
 - Oregon
 - Pennsylvania
 - Tennessee
 - Texas
 - Utah