

CD Sets and 3D Rendering for AVID Candlewood Hotel



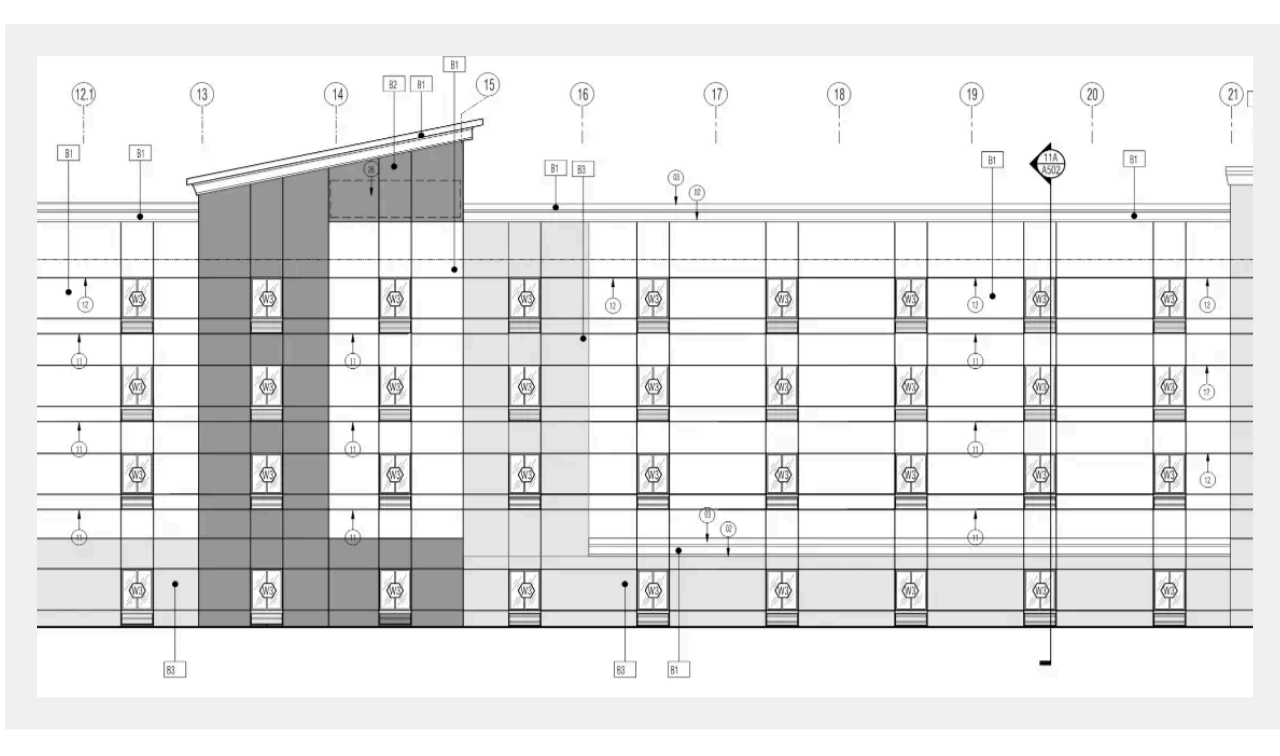
Project Details

- Project Name:** Avid And Candlewood by IHG
- Project Type:** Construction Documentation and 3D Rendering
- Location:** 350 Harding place, Nashville, Davidson CO, TN
- Type of Building:** Hotel
- Floors:** 4 Story
- Area of the building:** 90256 Sq. Ft.

Project Objective and Summary

The objective of this project was to develop a **comprehensive set of construction drawings** and equipment schedules for a multi-story hotel building, ensuring full compliance with Tennessee's architectural standards and building codes.

The project was outsourced to Tesla Outsourcing Services by an architectural firm based in Tennessee, USA. A dedicated team of two experienced architects was assigned exclusively to this project for approximately 2-3 months. Working in close coordination with the U.S. counterpart, the team meticulously followed American architectural practices and standards. The project was successfully delivered within schedule, leading to continued collaboration on subsequent hotel documentation assignments.



Project Description

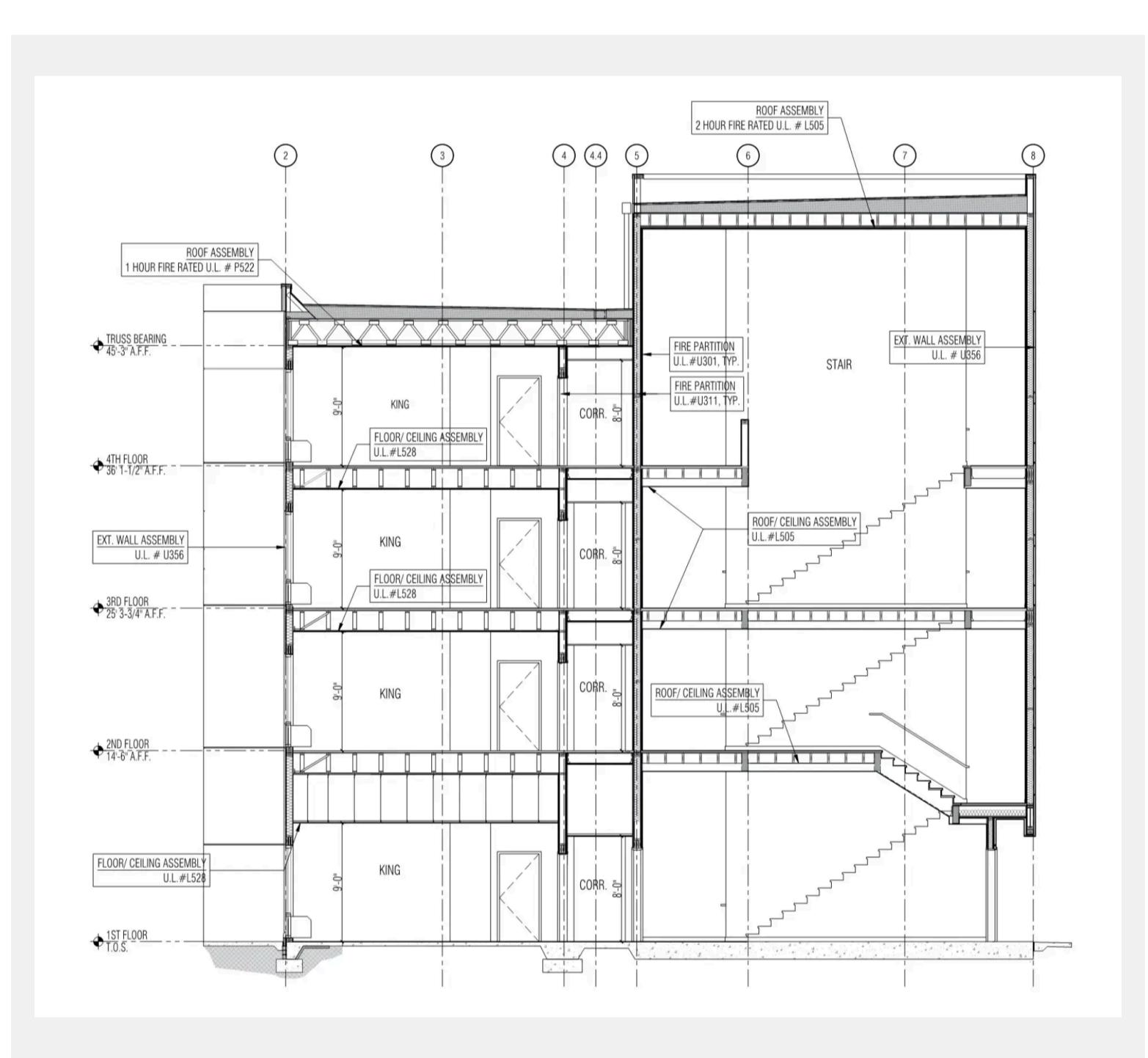
Project Scope	Building Data	Building Area
The project involved the development of construction drawings for a four-story hotel suite, integrating prototypes from two hospitality brands — Avid and Candlewood. The only inputs provided were basic prototype floor plans and elevations. The architectural team expanded these into fully detailed construction drawings, ensuring accuracy, coordination, and constructability throughout the documentation process.	Building Height: 59'-6" Number of Stories: 4 Type of Construction: Wood Frame Construction Sprinkled Building: Yes Construction Type: VA-Protected Wood Frame	First: 24,128 sq. ft. Second: 24,128 sq. ft. Third: 24,128 sq. ft. Fourth: 24,128 sq. ft. Total: 90,256 sq. ft.

Unit Breakdown – Avid

Room Type	1 ST	2 ND	3 RD	4 TH	Total
GR – K	3	6	6	6	21
GR-K – ADA	-	1	1	1	3
GR – Q	2	12	13	13	40
GR – Q – ADA	1(R.I.S.)	-	-	-	1
TOTAL	6	19	20	20	65

Unit Breakdown – Candlewood

Room Type	1 ST	2 ND	3 RD	4 TH	Total
STUDIO – KING	15	19	19	19	72
STUDIO – KING – ADA	1(R.I.S.)	1	2	-	2
STUDIO – QQ	3	4	6	6	16
STUDIO – QQ – ADA	2	2	2	-	6
1 BEDROOM SUITE	1	2	2	2	7
1 BEDROOM SUITE – ADA	1	-	-	-	1
TOTAL	-	-	-	-	104



Project Deliverables

The Construction Drawings of the Project included

- Site Plan
- Floor Plans-First Floor to Fourth Floor
- Room Matrix
- Guest Room Plans
- Interior Room Elevations
- Detailing of All Rooms
- Life Safety
- Reflected Ceiling Plan
- Enlarged Floor Plans
- Exterior Elevations
- Sections
- Construction Details

Also, we co-ordinate our Construction Drawings with Mechanical, Electrical, Plumbing and Structural Agencies.

Conclusion

Delivered high-quality, technically accurate construction drawings and 3D renderings within the stipulated timeline, despite limited initial inputs. Our consistent performance and adherence to U.S. architectural standards have enabled us to handle multiple outsourced projects ranging from conceptual design through complete construction documentation, including both exterior and interior renderings.

Project Gallery



We Serve Globally

<ul style="list-style-type: none"> Australia Austria Belgium Denmark France Germany Ireland Italy Netherlands 	<ul style="list-style-type: none"> Norway Poland Portugal Spain Sweden Switzerland UK Canada Mexico 	<ul style="list-style-type: none"> USA California Colorado Connecticut Florida Georgia Illinois Louisiana Massachusetts Minnesota Nevada New Jersey New York Oregon Pennsylvania Tennessee Texas Utah
--	--	---