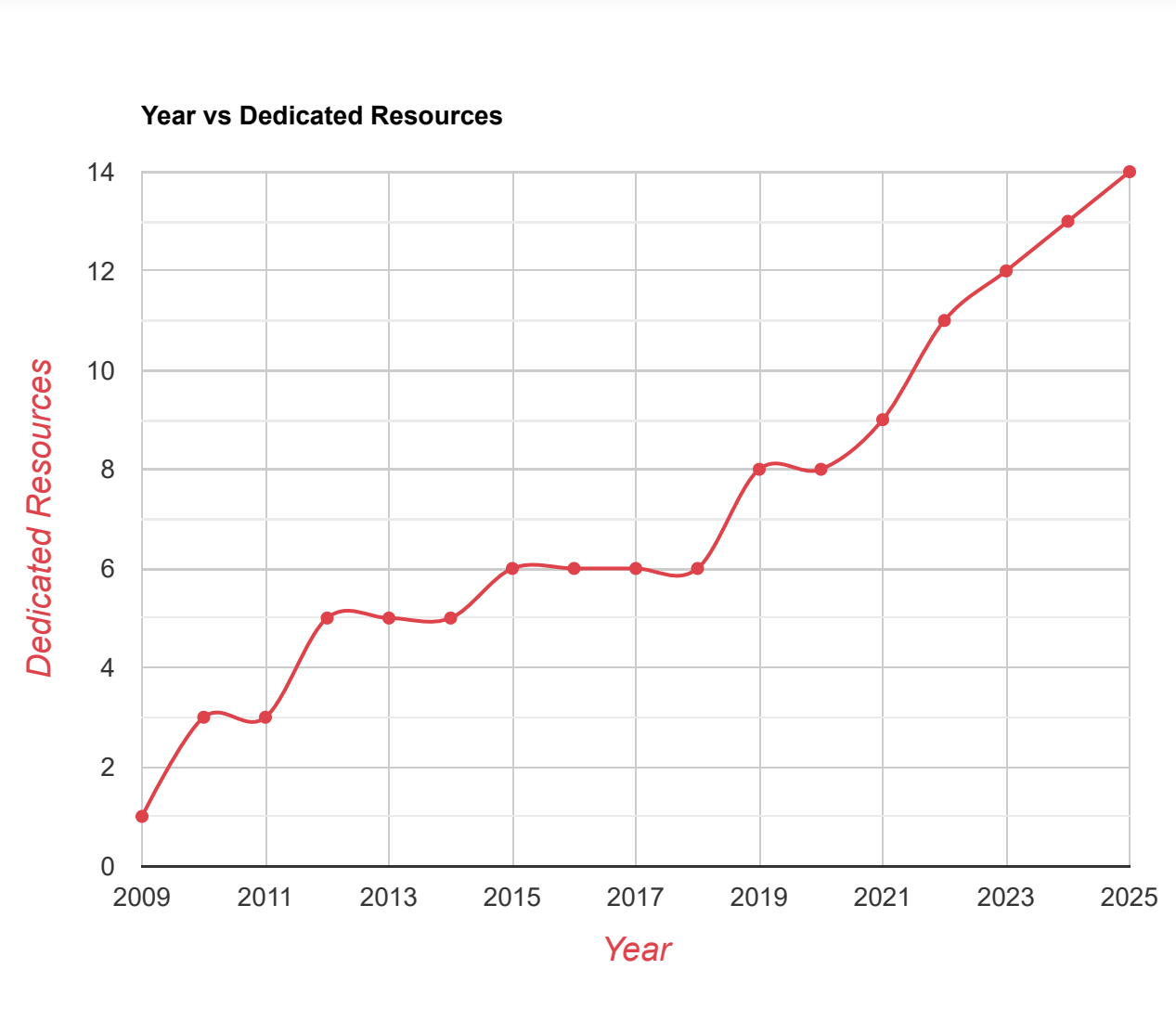


Dedicated Resource Arrangement Services for NK: End End Architectural Support

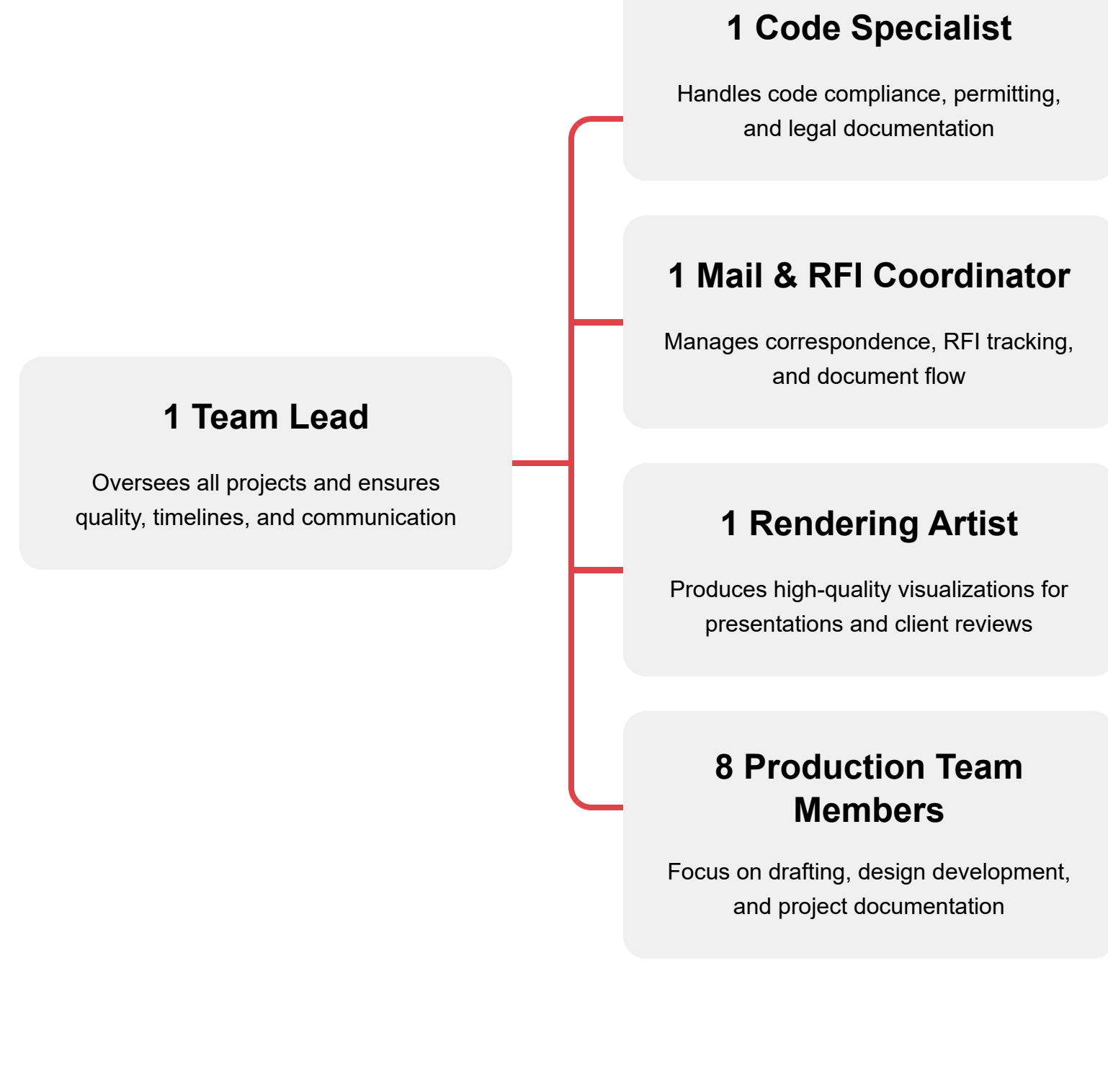
NK is a long-standing client for whom we deliver comprehensive Architectural services. His office in the U.S. (Tennessee) comprises of a core team, while the **execution arm** of the operations is entirely handled by **Tesla Outsourcing Services** based here in India.



TEAM COMPOSITION

Team Structure

A dedicated team of **12 members**, each playing a vital role in managing and executing projects efficiently



SCOPE OF WORK

Project Types

In collaboration with NK, we work on a wide variety of project types, including

- > **Hospitality:** Hotels
- > **Retail & Commercial:** C-Stores, India Bazaar, Shops
- > **Food & Beverage:** Restaurants, Tenant Infill (e.g., restaurants, salons)
- > **Residential & Senior Living:** Assisted Living, Townships
- > **Religious & Cultural:** Temples, Mosques
- > **Industrial:** Warehouses

Services Provided

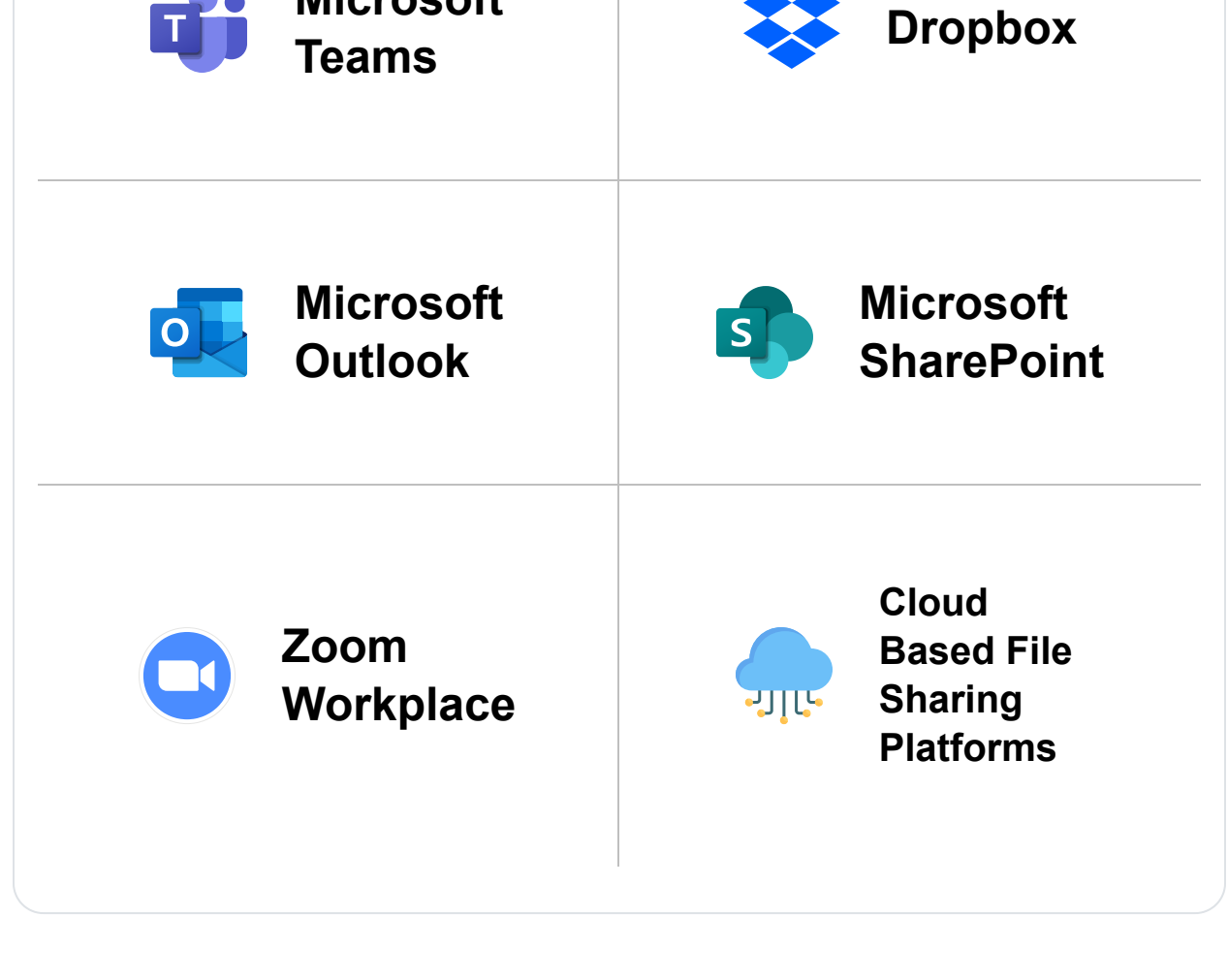
- > Conceptual Design
- > Schematic Diagrams
- > Construction Documentation (CD Sets)
- > Working Drawings
- > Construction-Stage Support
- > Code-Compliant Revisions and Final Submission

COMMUNICATION

Communication & Coordination

We maintain direct and seamless communication with NK's office team, ensuring that expectations and are aligned at every phase. Despite the geographical difference, the workflow remains smooth and well-coordinated.

- Client & Consultant Communication**
Primarily via emails and calls for project updates, reviews, and approvals.
- Coordination with NK**
Conducted through Microsoft Teams, scheduled meetings, and emails for efficient project management.



Daily Coordination with NK

To ensure clarity and maintain project momentum, we hold **daily meetings with NK**, which serve as a cornerstone of our workflow. These meetings typically include

- Project Briefing**
NK provides updates on current projects and outlines the tasks for the day.
- Scope Discussion**
We review the overall project scope and specific client requirements.
- Client Inputs**
Any new inputs or feedback from the client are discussed in detail.
- Doubt Clarification**
We address any project-related or code-related questions, ensuring a clear understanding before proceeding.



WORKFLOW

Workflow Overview

- Project Assigned by NK to our team.
- We develop a Schematic Diagram based on initial concepts.
- The CD Sets and Working Drawings are created with precision and attention to compliance.
- During the Construction Stage, we provide detailed support and real-time coordination.
- The final set of drawings is submitted to the local council for review.
- Upon receiving markups, our team promptly makes necessary revisions based on code requirements, ensuring smooth progression to the next phase.

Project Workflow in Detail

The workflow is customized to each project but generally follows these steps

01 Receiving Project Inputs

- > **Directly from Clients:** We receive site information and design requirements.
- > **Via NK:** Inputs are coordinated and shared with us by NK after client meetings. In both cases, once inputs are received, we begin developing the project.

02 Initial Design - Floor Plan

- > We start by creating the **floor plan** based on the requirements.
- > The plan is shared with the **owner or NK for review and feedback.**
- > After necessary revisions and approvals, we move on to developing the complete drawing set.

03 Drawing Set Development

- > The full architectural set is developed according to the city's **code requirements** and the project type.
- > We then coordinate with **MEP and structural consultants**, integrating their inputs into our drawings.

04 Quality Check & Code Submittal

- > Once the full drawing set is complete, we conduct a **thorough quality check.**
- > The final set is prepared for **code submittal** to the city.

05 Legal Forms & Applications

- > Simultaneously, we apply for any required legal documents early in the process to avoid delays.

Examples include

- o **TDLR (Texas)**
- o **MLGW (Memphis)**
- o **Grease Trap Applications (for restaurant projects)**

These forms are submitted ahead of time due to long processing periods.

06 Addressing Code Comments

- > After submittal, we receive **code comments** from the city.
- > We
 - o Review and implement the necessary changes
 - o Coordinate with consultants as needed
 - o **Resubmit** for approval

Note: Some projects may require multiple rounds of resubmittals (usually 1-3) depending on the city and complexity.

07 Final Approval

- > We ensure ongoing coordination with the **city officials, project owner, and consultants.**
- > The process concludes once **full project approval** is obtained.

COMPLIANCE

Code Compliance - A Strategic Strength

Our team specializes in creating code-compliant drawings that align with state-specific U.S. codes. This not only ensures timely approval from local councils but also significantly reduces the number of review cycles. Our thorough understanding of jurisdictional requirements adds substantial value to NK's projects.

- Upload Plans**
Submit drafted plans to the city portal
- Coordinate with Authority**
Engage with local authorities for feedback
- Review Comments**
Analyze feedback from authorities
- Revise Plans**
Make necessary changes based on feedback

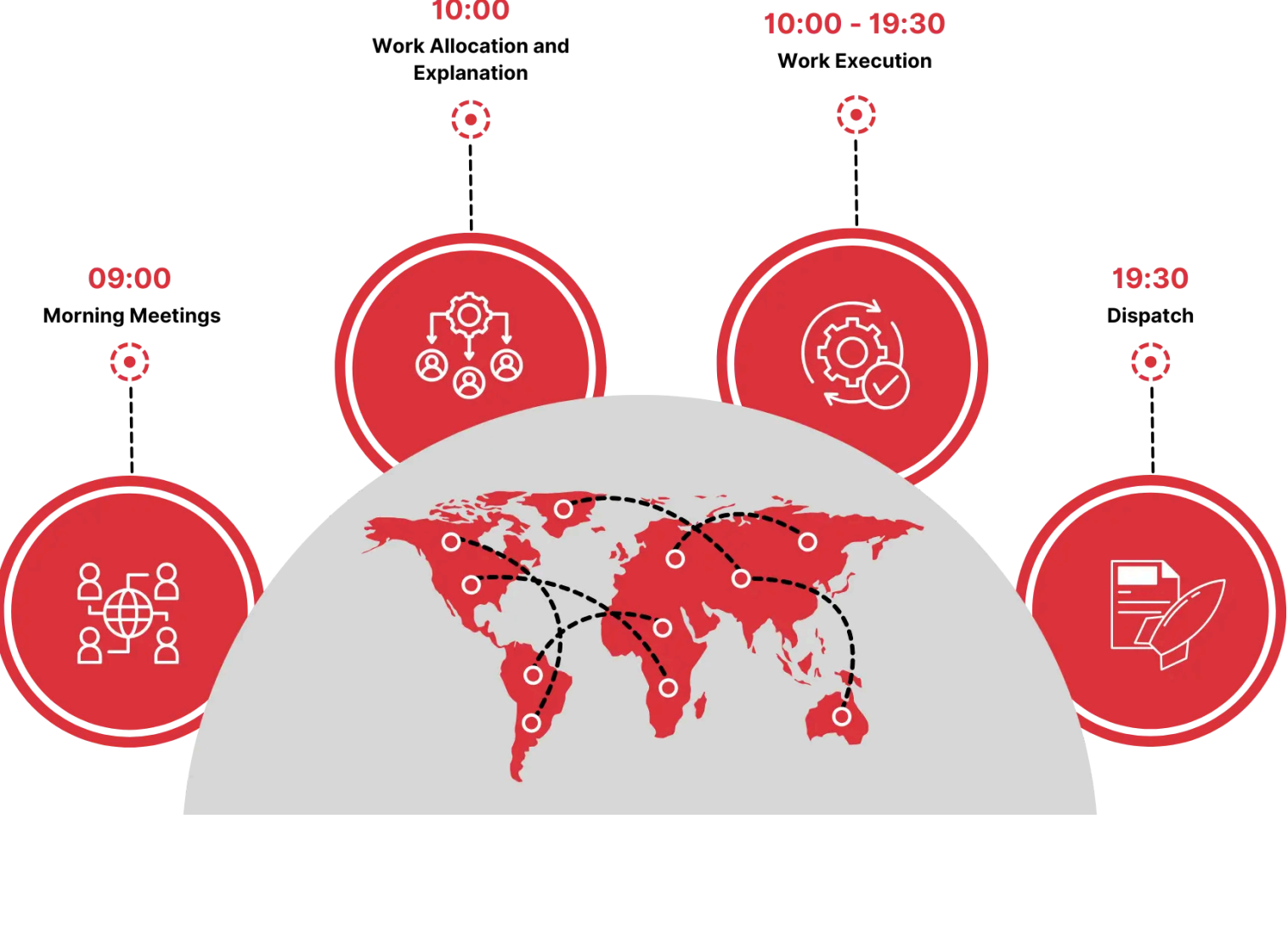
PLANNING

Time Zone Considerations & Proactive Planning

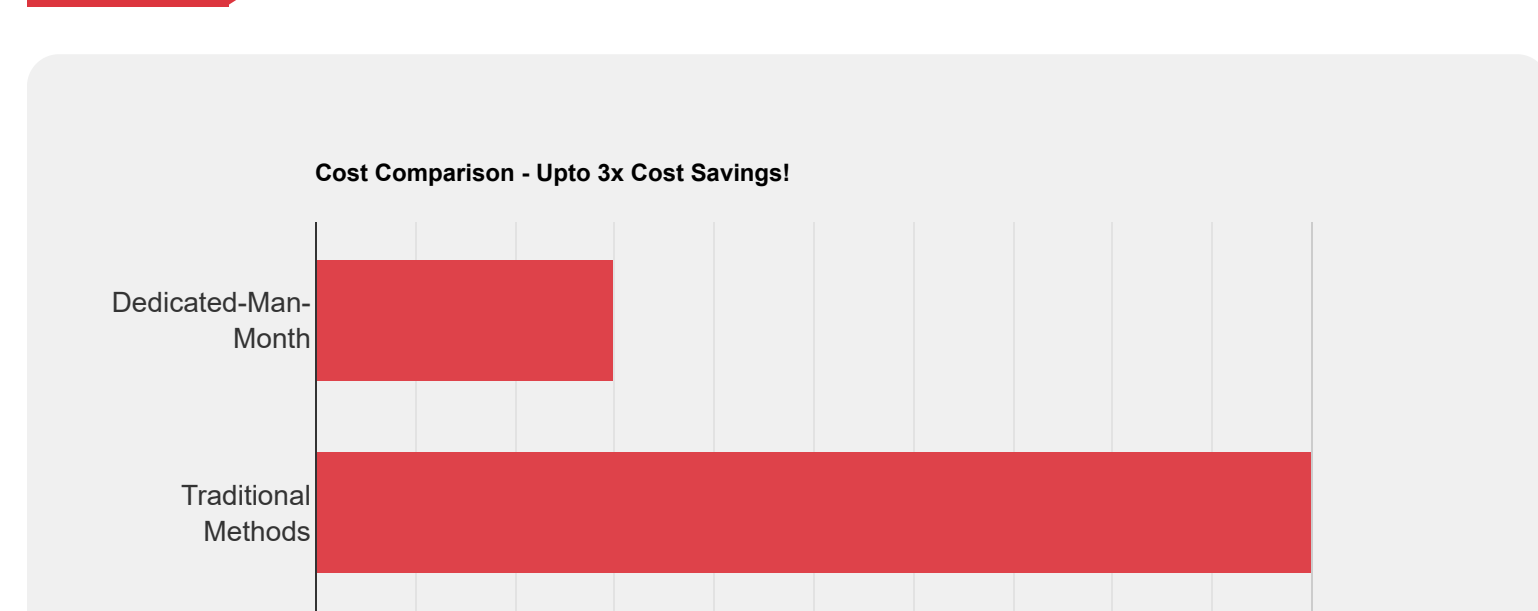
Due to the **time difference** between our team and the client/Project Types, we take a **proactive approach** to project delivery

- We aim to **complete our tasks a day in advance**, ensuring time for reviews, revisions, and adjustments before deadlines.
- This practice helps avoid delays and ensures we're always prepared with the **required details and coordination** when needed.

This structured daily interaction helps us stay aligned with the client's expectations, maintain high standards, and deliver on time.



SAVINGS



Efficiency and Cost Savings

- 01** Tesla Outsourcing Services handles **100+ projects** per quarter for NK, all executed in collaboration between his U.S. office and our India-based team.
- 02** With the entire production team located in India, significant cost savings are realized without compromising quality or turnaround time.
- 03** Estimated cost savings range between **40%-60%**, depending on project complexity and duration.

PROJECTS

Construction Documentation Set Projects

Projects executed with complete CD Sets along with Code Compliance

La Quinta Jackson

Developing a complete set of Construction Drawings with equipment schedules for the hotel La Quinta in Jackson, Tennessee with adherence to architectural standards and building codes specific to Tennessee, United States.

[READ THE CASE STUDY](#)

India Bazar

Accurate documentation of existing conditions marked by demolition and the modeling of proposed new construction by leveraging existing CAD documentation and photograph records provided.

[READ THE CASE STUDY](#)

Partner with us and benefit from synergy between your U.S. based office and our India-based execution team! Contact us now to **build your offshore team.**

[CONTACT US](#)

Experience exceptional return on investment with our Dedicated Resource Arrangement for AEC, achieving cost savings of up to 60%!

We Serve Globally

Australia	Norway	USA	Minnesota
Austria	Poland	California	Nevada
Belgium	Portugal	Colorado	New Jersey
Denmark	Spain	Connecticut	New York
France	Sweden	Florida	Oregon
Germany	Switzerland	Georgia	Pennsylvania
Ireland	UK	Illinois	Tennessee
Italy	Canada	Louisiana	Texas
Netherlands	Mexico	Massachusetts	Utah