

IMPORTANCE OF REVIT FAMILY CREATION IN THE CONSTRUCTION INDUSTRY

Revit family Creation Services creates families of a component that is used to build a model like doors, windows, etc. that lays common properties, parameters and virtual model. Each family would have different size and materials. Changes in Revit family can be easily modified to family item throughout the project.

Revit family files are known as RFA files that is loaded using Revit family manager from the software, Family editor tool can alter the existing elements or create new when required as per standards.

ADVANTAGES OF REVIT FAMILY CREATION

Revit family Creation can bring many benefits to the AEC Industry such as accurate dimensions of components of family is acquired. Families can be created in 2D and 3D model that are often parametric and non-parametric in nature. Modification can be easily made in families; it can be stored easily without losing data and saves time.



FAMILIES IN REVIT 3D MODELING

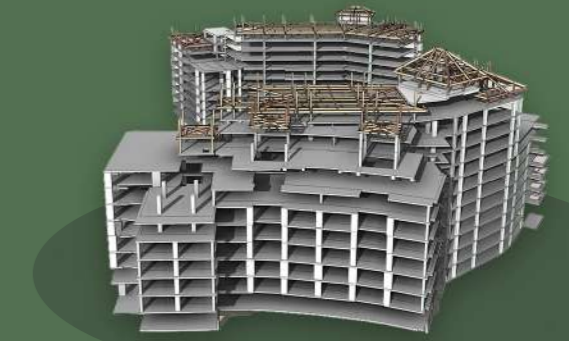
FAMILIES IN REVIT 3D MODELING SERVICES ARE OS BELOW

PARAMETRIC FAMILIES



SYSTEM FAMILIES

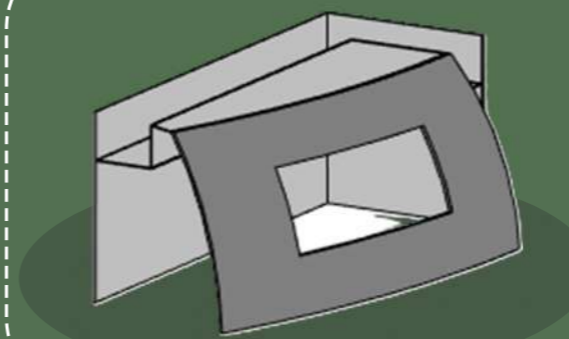
IT HAS BASIC COMPONENTS FAMILIES SUCH AS WALLS, FLOORS, DUCT, ETC. IN BIM COORDINATION SERVICES MODEL. THOSE FAMILIES ARE ASSEMBLED ON TIME OF INSTALLATION. SYSTEM FAMILIES ARE ALREADY PLACED IN THE SOFTWARE.



LOADABLE FAMILIES

IT FAMILIES ARE PARAMETRIC IT CAN BE IMPLEMENTED IN MULTIPLE PROJECTS. REVIT FARMILY FILES CAN BE EXTERNALLY CREATED AND INDEPENDENT MODELS CAN BE IMPORTED INTO REVIT PROJECTS. REVIT FAMILIES CAN BE LOADED BY ANNOTATIONS SUCH AS TEXT, DIMENSIONS AND TAGS. IT CAN BE DISPLAYED IN VIEW YOU PLACE THEM.

NON-PARAMETRIC FAMILIES



IN-PLACE ELEMENTS

CUSTOMIZED ELEMENTS IN ROVIT FAMILLES ARE CREATED WITH CUSTOMIZED PARAMETERS SUCH AS SIZE, MATERIALS, FOR EFFECTIVE USE IN THE MODEL.