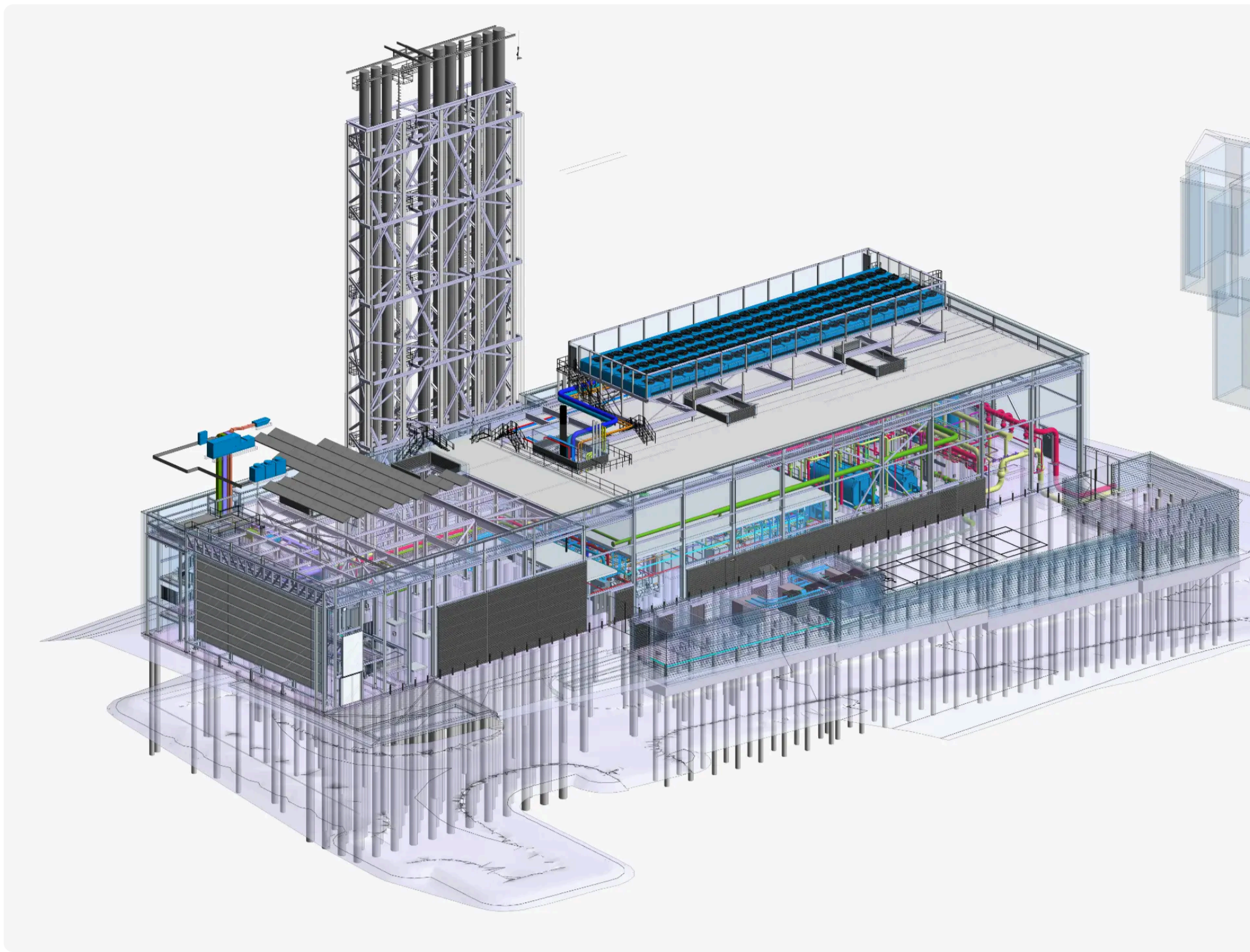


MEPF BIM Modeling of a Commercial Building - Greenwich

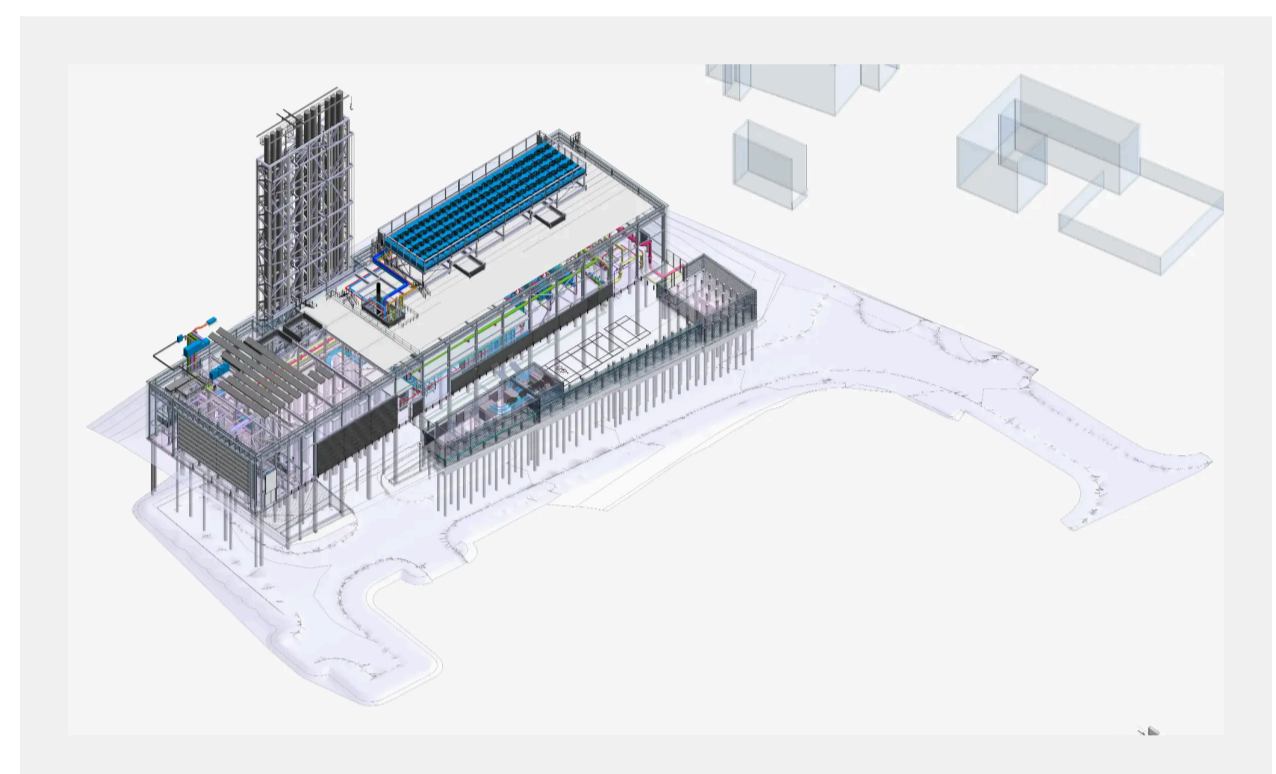


Project Details

- Project Type:** CAD to BIM
- Scope of Work:** Modeling of Containment, Fire, Lighting and Electrical services equipment
- Type of Building:** Commercial
- LOD:** 300
- Software:** Revit
- Accuracy:** 0.001 m
- Turnaround time:** 4 Days

BIM Modeling of MEPF elements and their Containments

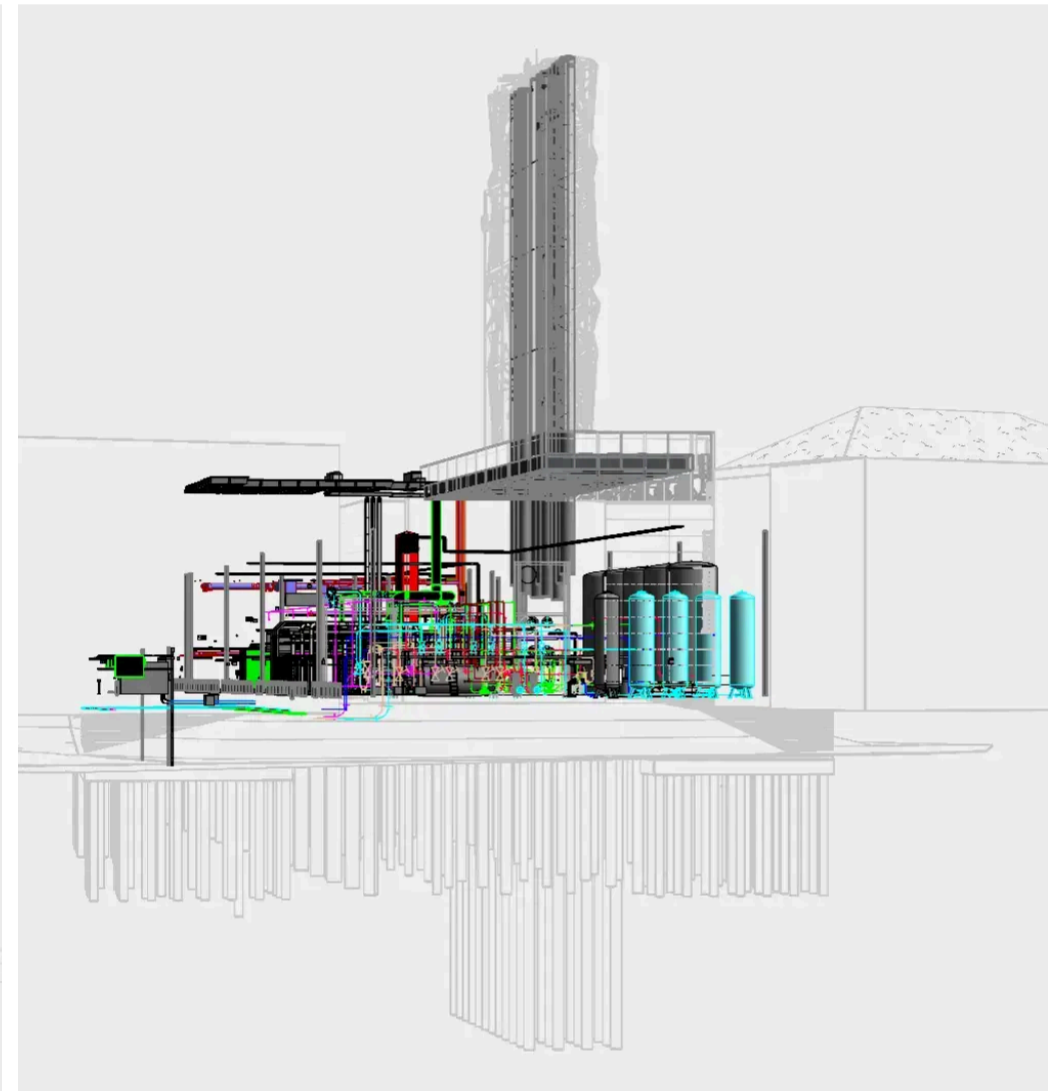
We recently completed a CAD to BIM conversion project for an Electrical Room in the UK. This involved transforming existing 2D CAD drawings into a comprehensive 3D Building Information Model. Our team successfully delivered a clash-free LOD 300 model within approximately four days, demonstrating our efficiency and precision in BIM execution.



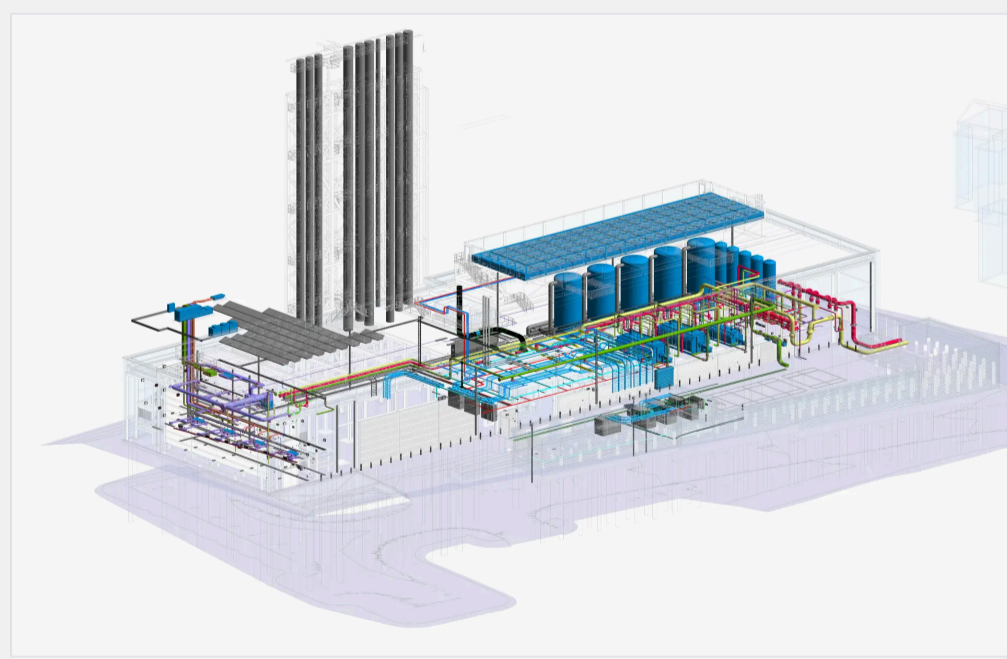
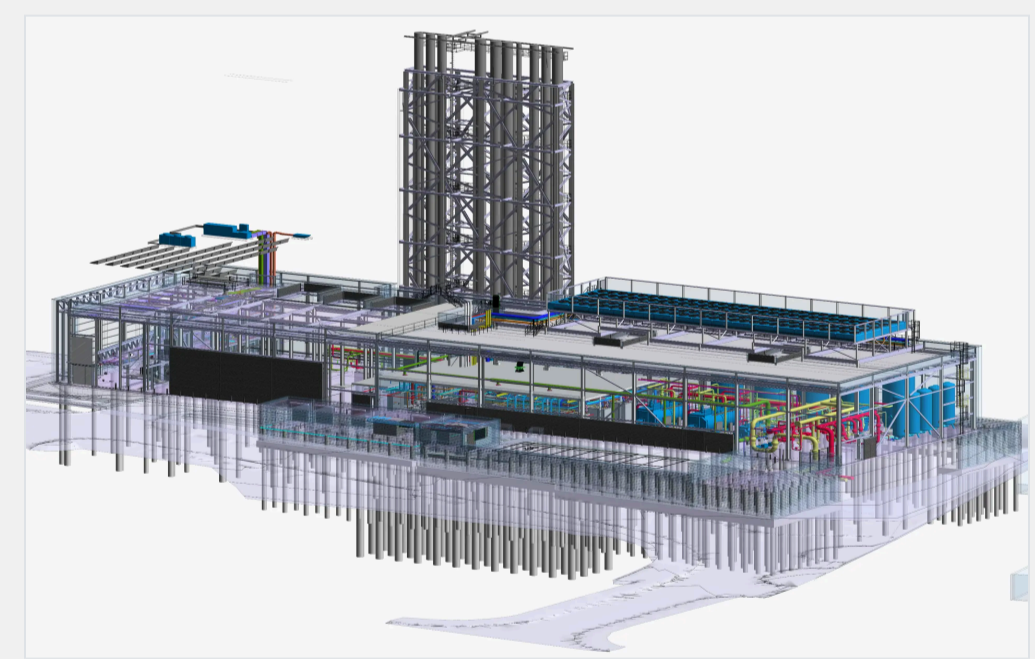
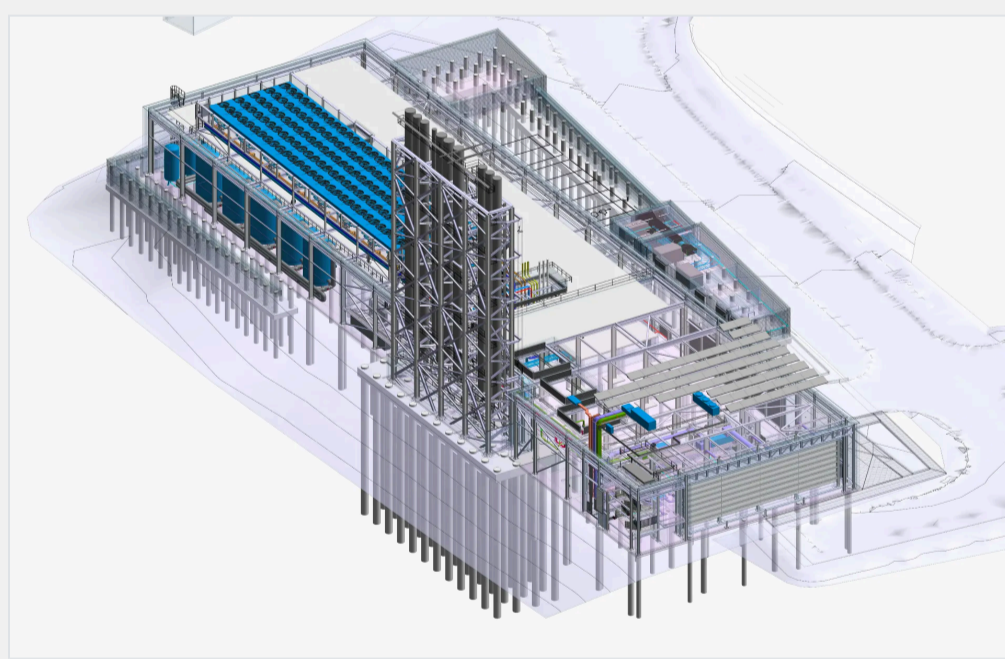
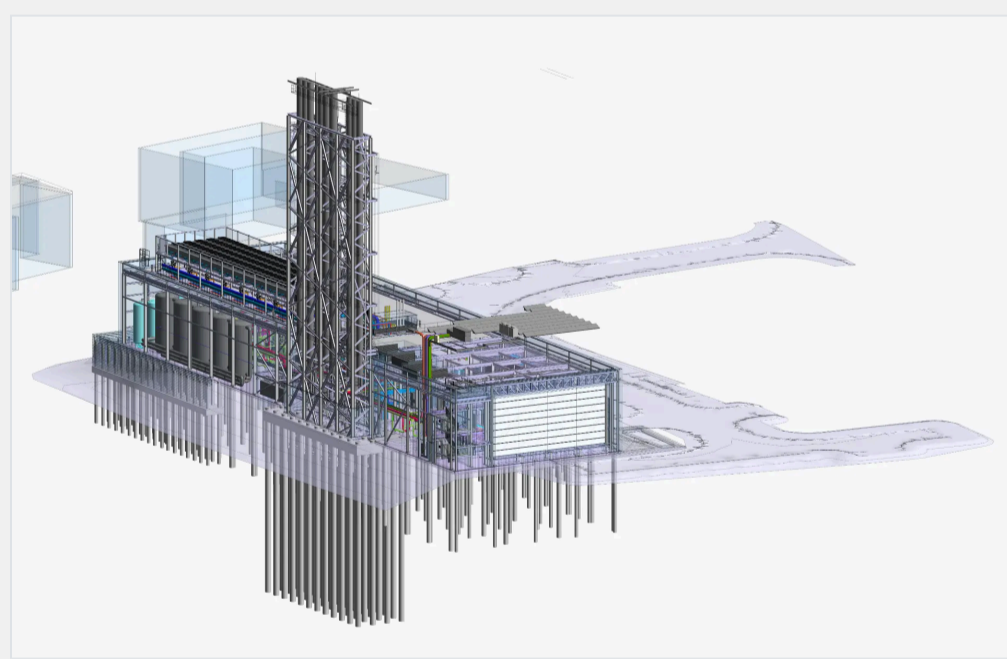
Model Contents

In this project, we followed a systematic approach for modeling and coordination:

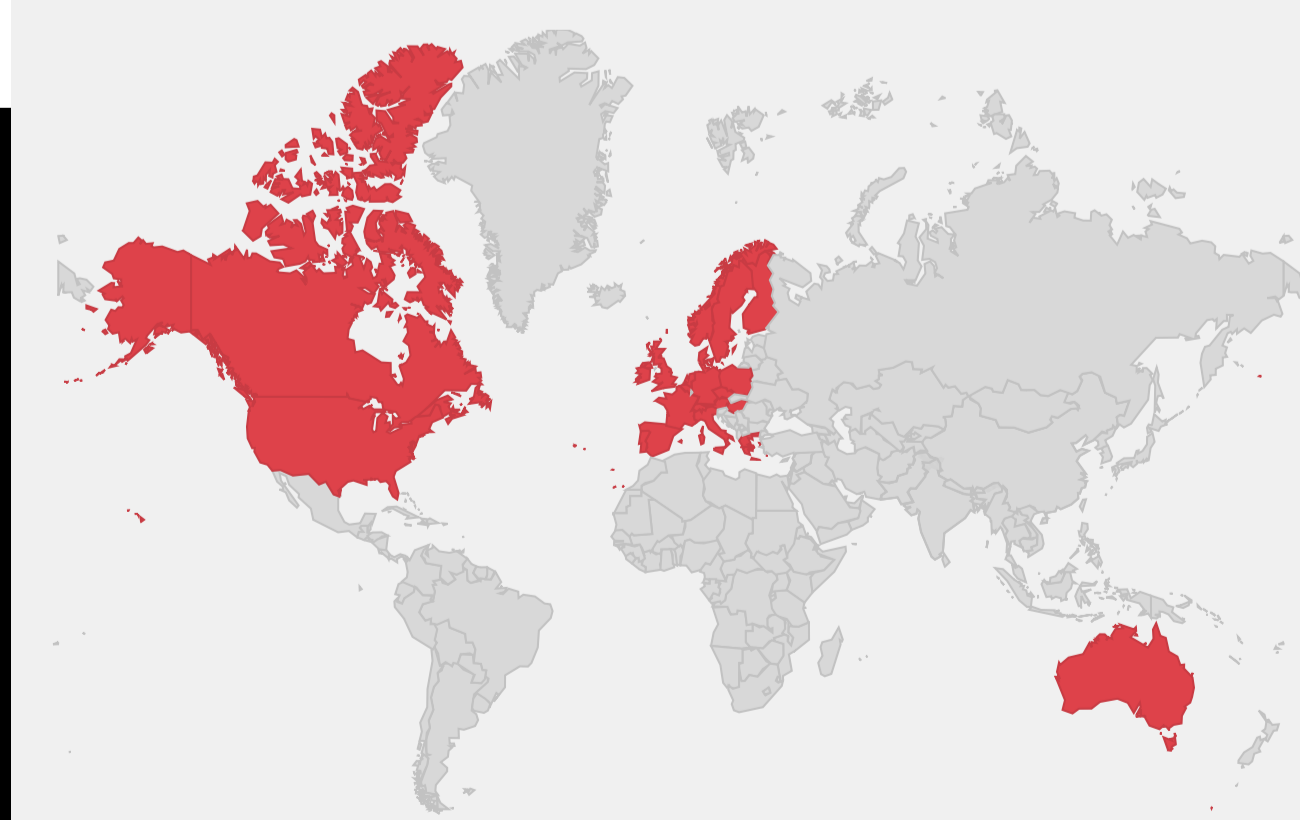
We modeled the drainage and domestic water supply systems based on the provided CAD inputs. Using Navisworks Manage, we resolved internal clashes through a comprehensive clash detection process, identifying conflicts with architectural, structural, mechanical, and electrical services.



Project Gallery



We Serve Globally



- | | | | |
|------------|-------------|---------------|--------------|
| Australia | Norway | USA | Minnesota |
| Austria | Poland | California | Nevada |
| Belgium | Portugal | Colorado | New Jersey |
| Denmark | Spain | Connecticut | New York |
| France | Sweden | Florida | Oregon |
| Germany | Switzerland | Georgia | Pennsylvania |
| Ireland | UK | Illinois | Tennessee |
| Italy | Canada | Louisiana | Texas |
| Netherland | Mexico | Massachusetts | Utah |