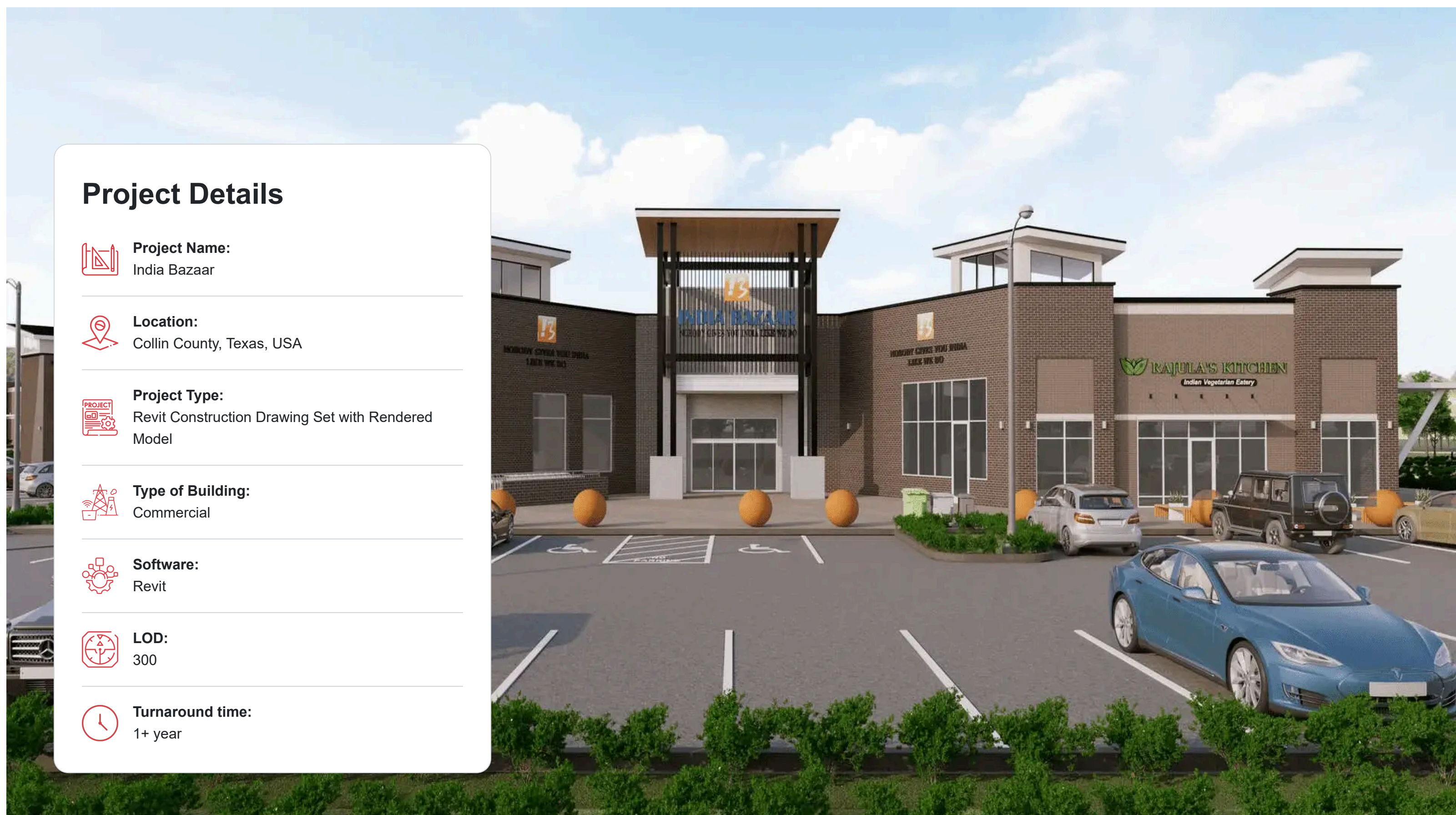


# Revit Construction Drawings for India Bazar



### Project Details

- Project Name:**  
India Bazaar

---

- Location:**  
Collin County, Texas, USA

---

- Project Type:**  
Revit Construction Drawing Set with Rendered Model

---

- Type of Building:**  
Commercial

---

- Software:**  
Revit

---

- LOD:**  
300

---

- Turnaround time:**  
1+ year

## Revit Modeling, Construction Documentation and Rendering of the Commercial Building

This project presented unique challenges, making its successful execution a testament to our team's expertise and perseverance.

Our deep knowledge of local building codes and proactive liaisoning with local government bodies were crucial in navigating the following demanding aspects:

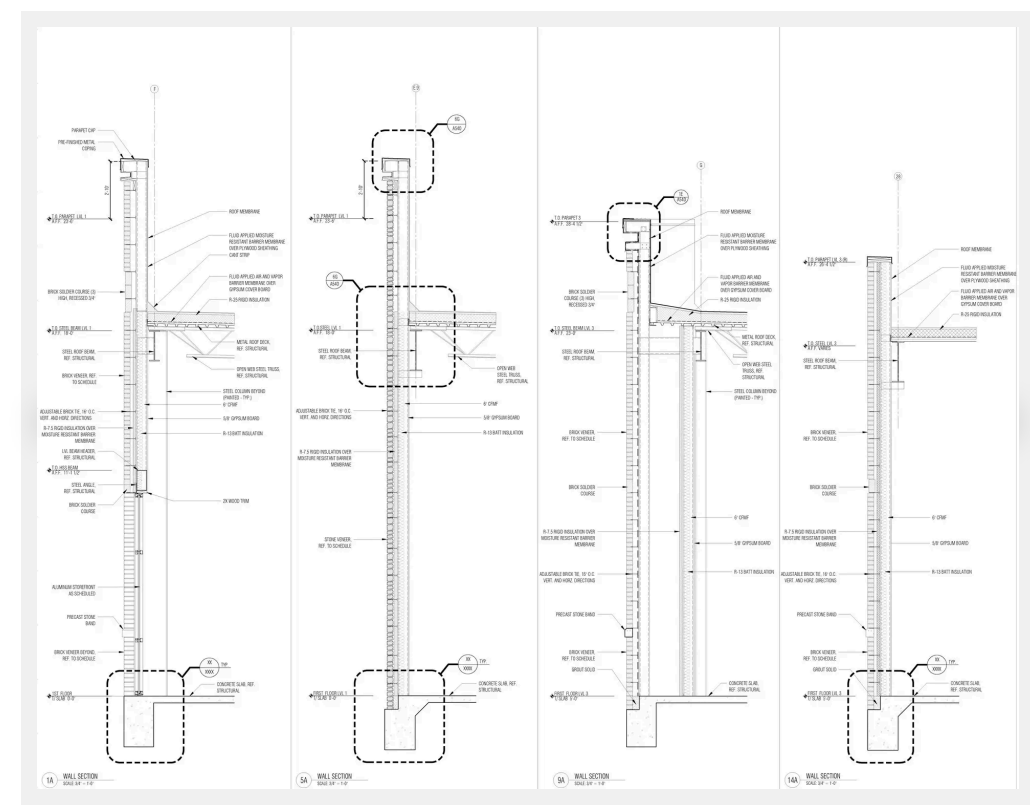
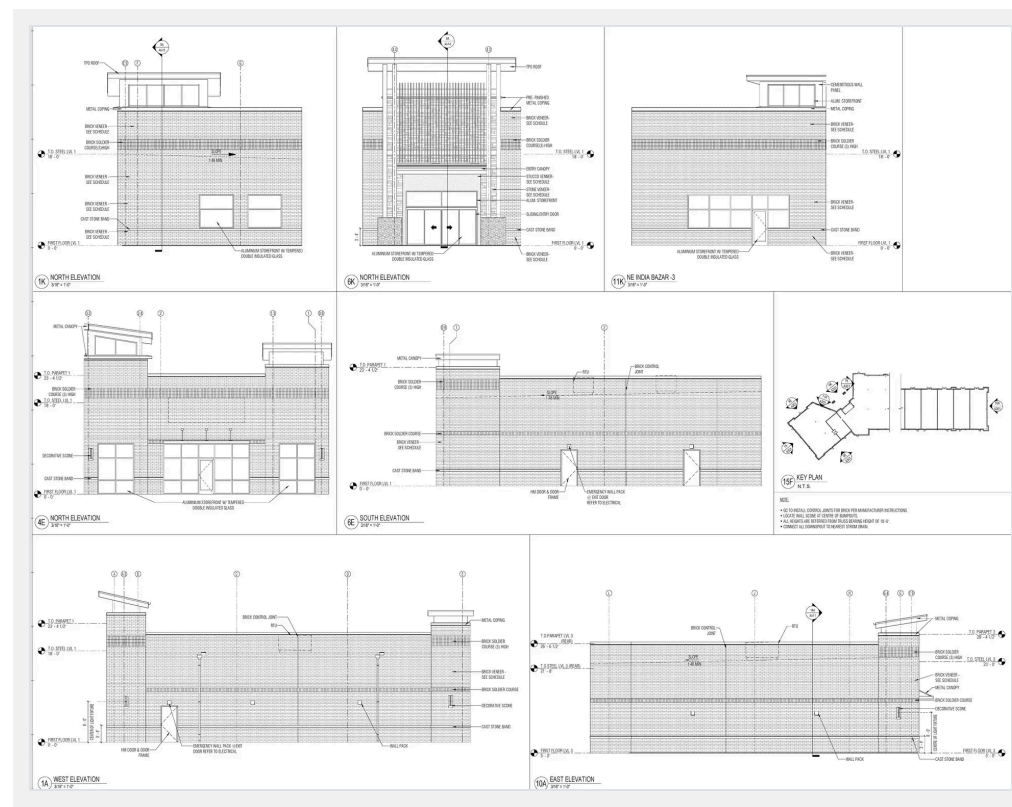
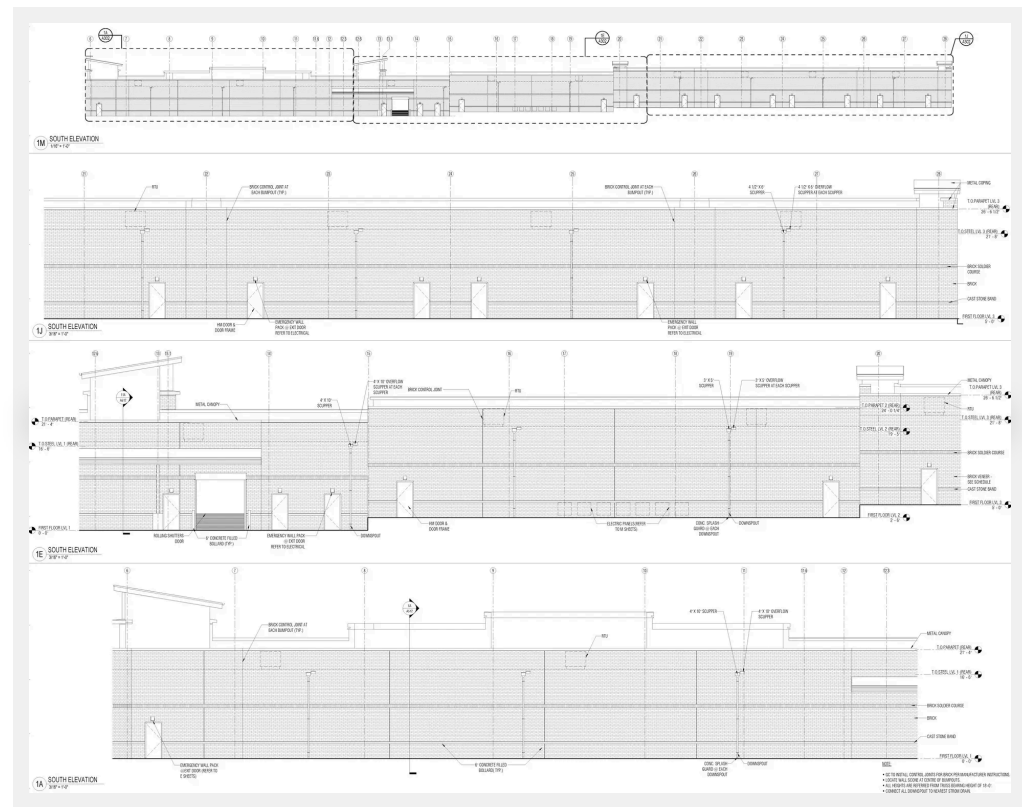
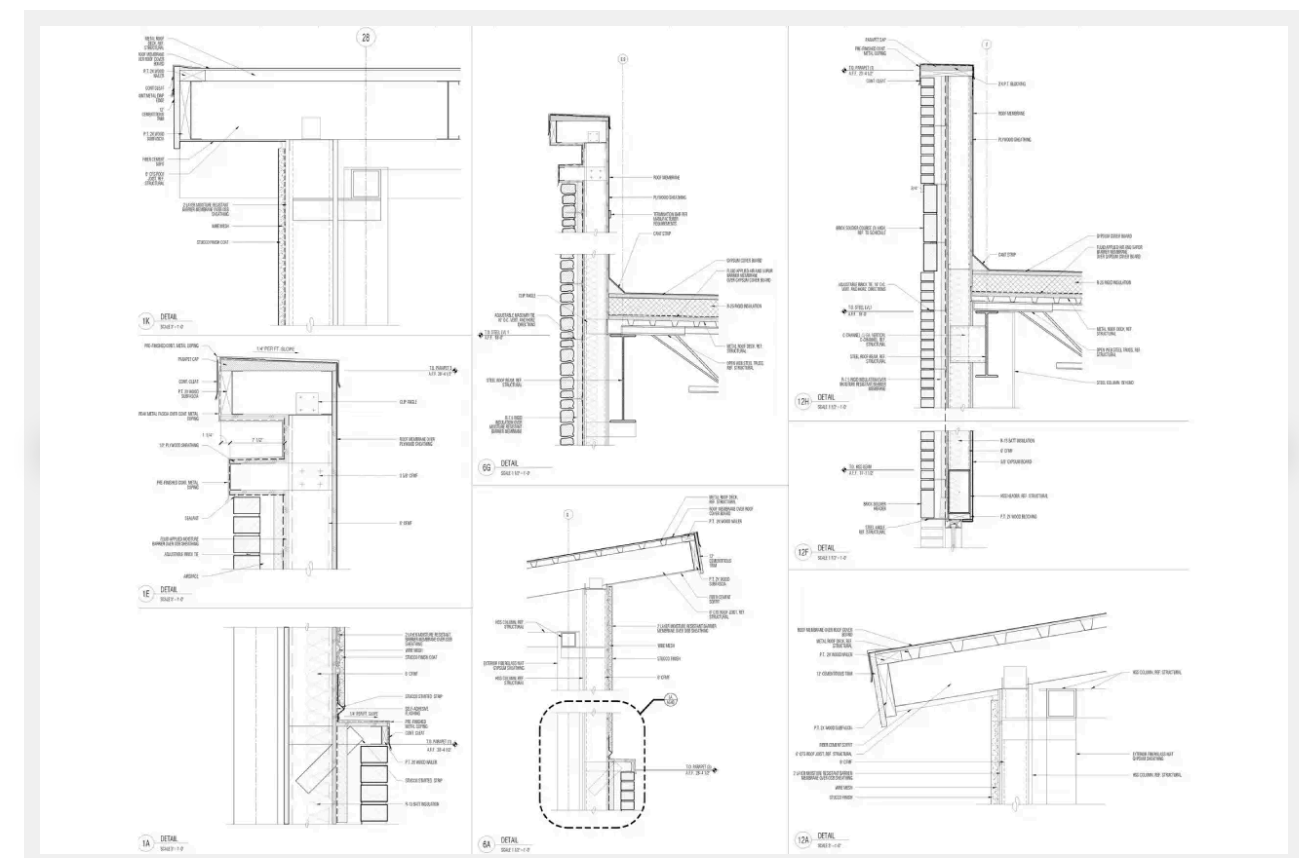
- **Complex Floor Levels:** Navigating and coordinating different floor levels within the building's design.
- **Rigorous City Code Compliance:** Adhering strictly to city codes for material calculations, which necessitated significant revisions to the floor plan, elevations, and rendered views.
- **Challenging Site Plan Approval:** Securing site plan approval from the city amidst numerous restrictions.

Despite these hurdles, our team delivered a **comprehensive construction set** with a rendered model in LOD 300, achieving PSP Approval after over a year of dedicated effort. This project truly showcases our ability to overcome significant obstacles and deliver exceptional results.

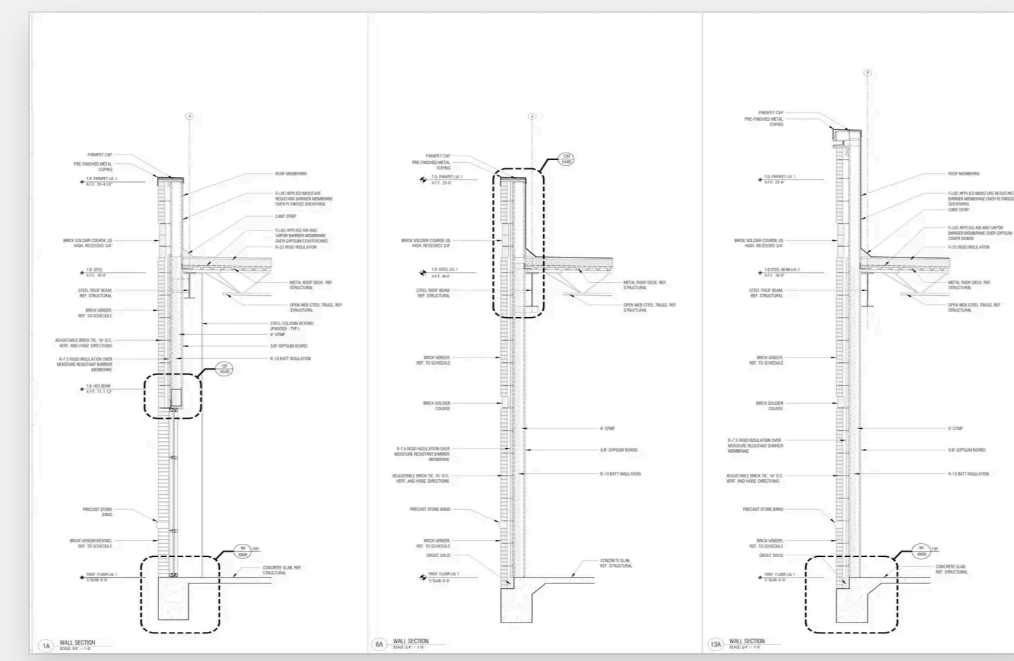
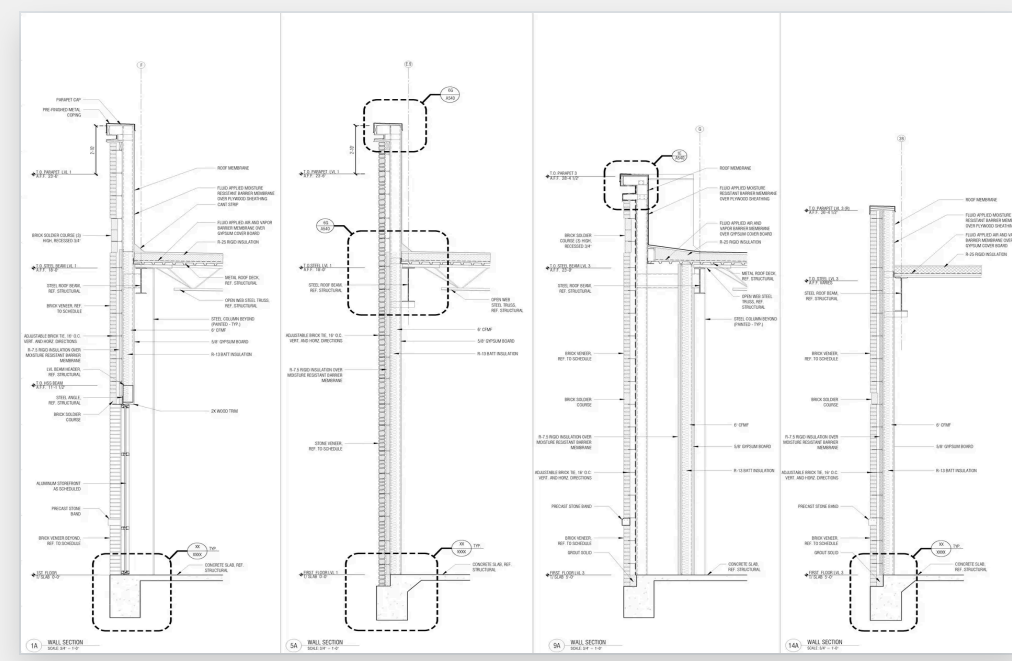
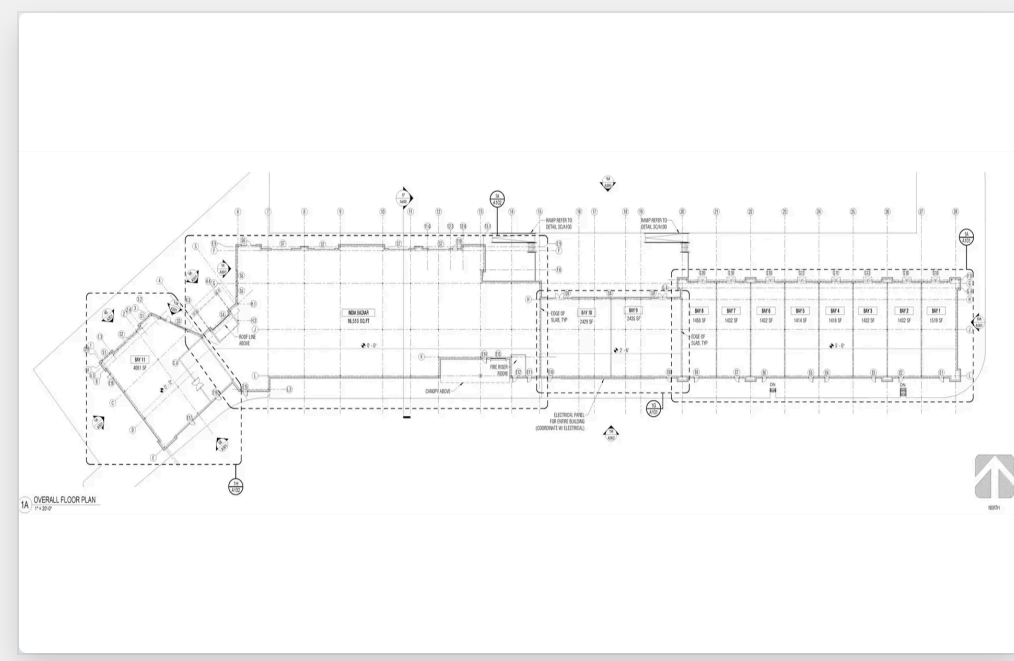
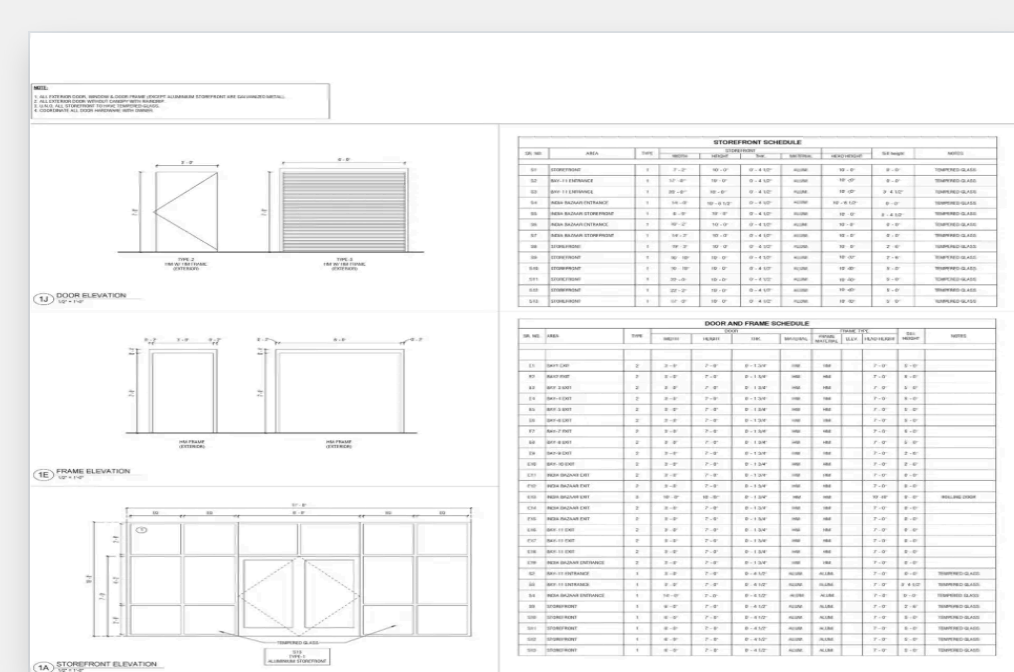
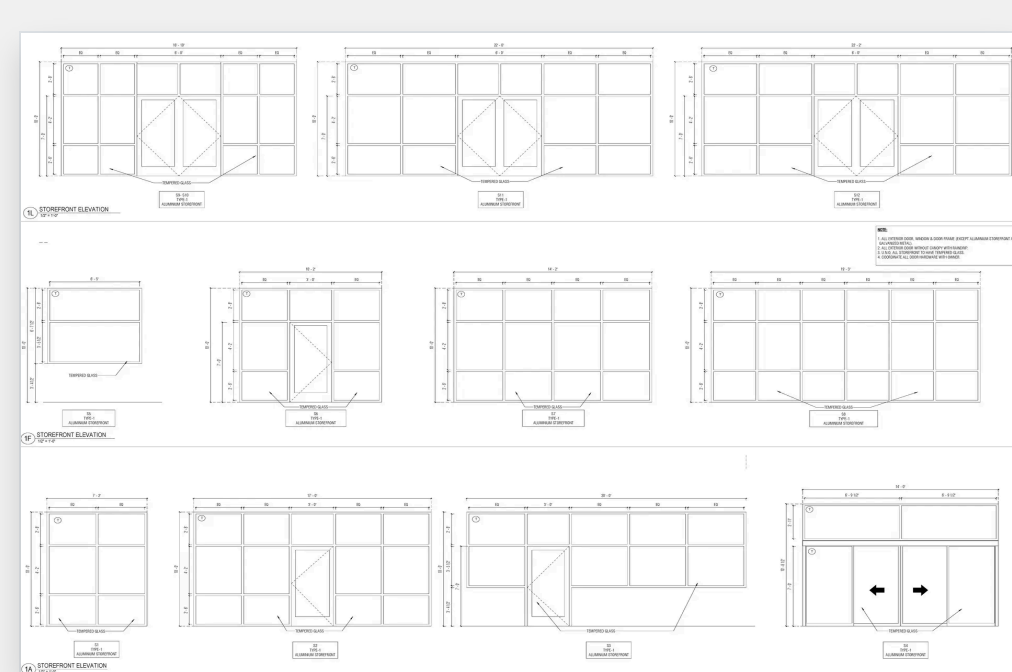
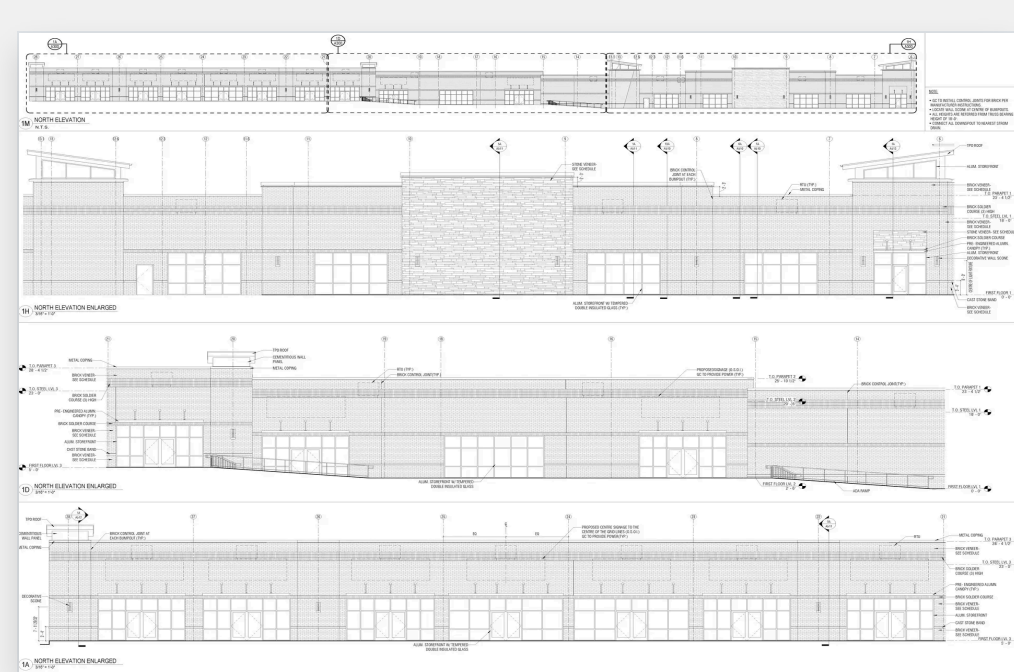


### Model Contents

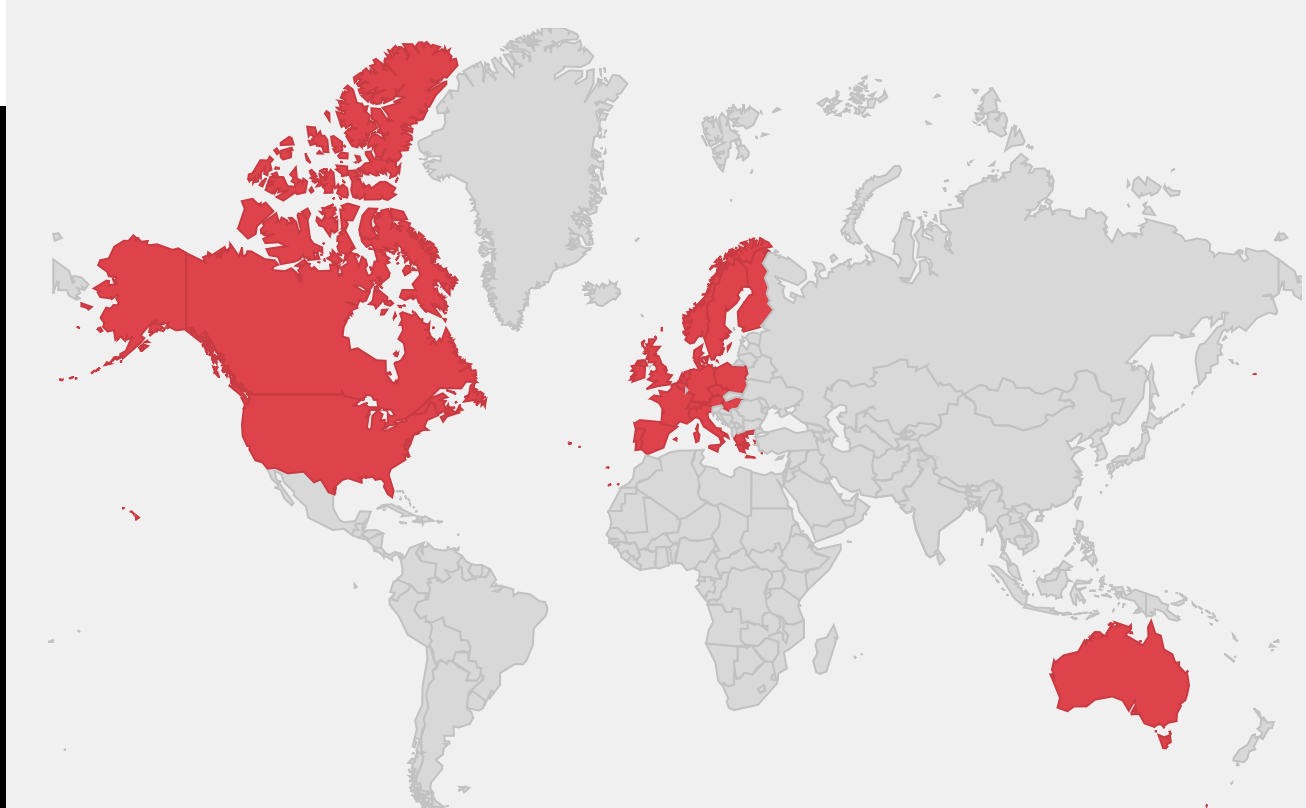
- Our team meticulously modeled the entire India Bazaar group complex, encompassing the hotel, retail spaces, restaurants, and the India Bazaar itself. We leveraged 3ds Max for the core modeling and Corona Renderer to achieve stunning visual fidelity.
- Every minute detail was created using Edit Poly and Spline commands. To further enhance the realism and dynamism of the building, we incorporated comprehensive landscaping, diverse objects, and human elements.
- For the construction set, we used Revit to tackle complex design forms by utilizing stacked walls, generic models, and custom family creations. Revit's drafting tools were indispensable for generating precise details for both sections and wall sections, ensuring accuracy throughout.



### Project Gallery



### We Serve Globally



- |             |             |                 |                |
|-------------|-------------|-----------------|----------------|
| Australia   | Norway      | USA             | • Minnesota    |
| Austria     | Poland      | • California    | • Nevada       |
| Belgium     | Portugal    | • Colorado      | • New Jersey   |
| Denmark     | Spain       | • Connecticut   | • New York     |
| France      | Sweden      | • Florida       | • Oregon       |
| Germany     | Switzerland | • Georgia       | • Pennsylvania |
| Ireland     | UK          | • Illinois      | • Tennessee    |
| Italy       | Canada      | • Louisiana     | • Texas        |
| Netherlands | Mexico      | • Massachusetts | • Utah         |