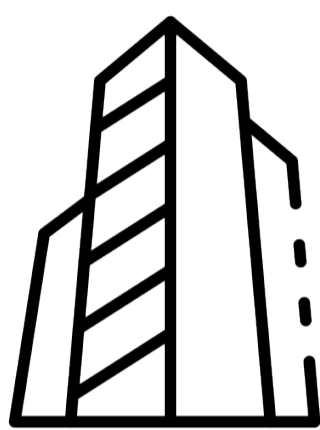


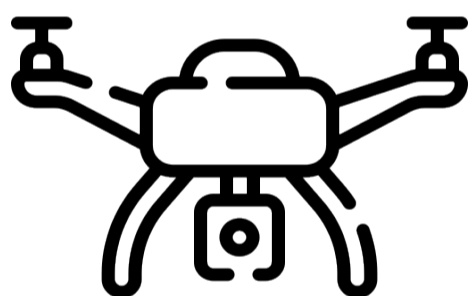
AUGMENTED REALITY AND VIRTUAL REALITY

- Augmented reality (AR) is an enhanced version of the real physical world that is achieved through the use of digital visual elements, sound, or other sensory stimuli delivered via technology.
- Virtual reality (VR) refers to a computer-generated simulation in which a person can interact within an artificial three-dimensional environment using electronic devices, such as special goggles with a screen or gloves fitted with sensors.
- AR and VR both can be used to enhance overall customer experience as clients can exactly see what their project will look like when it's complete.



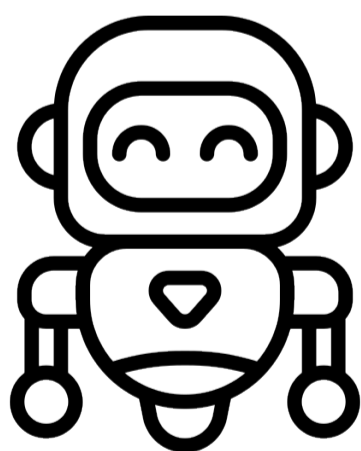
BUILDING INFORMATION MODEL

- BIM is an intelligent 3D model-based process that provides AEC professionals the insight and tools to more efficiently plan, design, construct, and manage buildings and infrastructure.
- It detects clashes in the preconstruction stage and saves rework, time, resources and ultimately cost.
- It enhances coordination between all the stakeholders involved in the process.



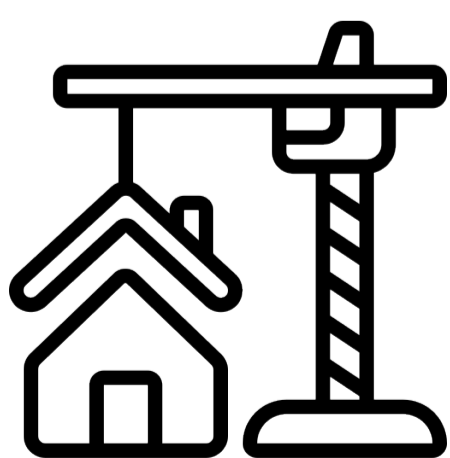
DRONES

- Drone can be used for survey of the site and for tracking the construction process.
- Drones can cover a large area in quick time which increases the speed of the monitoring process.
- Drones can safely survey places which are difficult for humans to monitor.



ROBOTS

- Robots are used in the construction sector for repetitive tasks like brick-laying and masonry.
- Robots can take over risky tasks like demolition and prevent injuries.
- Robots can increase speed and reduce errors and inconsistencies.



PREFABRICATION

- Prefabrication is the creation of a building's components offsite, generally in a factory, and then assembling the building onsite.
- The factory-controlled process generates less waste, creates fewer site disturbances and allows for tighter construction.
- Construction of modular buildings occurs simultaneously with site work, allowing projects to be completed in half the time of traditional construction.