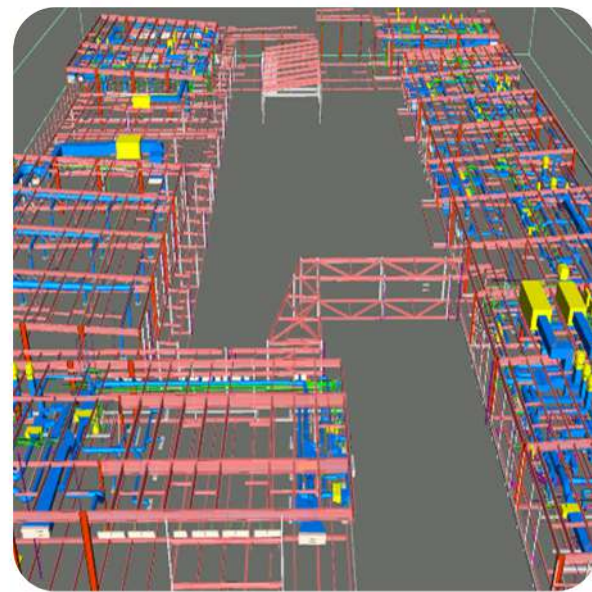


# WHAT ARE BIM COORDINATOR'S JOB RESPONSIBILITIES?

BIM COORDINATOR THE PROCESS OF GENERATING AND MANAGING DIGITAL MODELS OF PLACES; BUILDING INFORMATION MODELS ARE VIRTUAL FILES THAT HELP WITH DECISION-MAKING DURING THE BUILDING PROCESS.

THE BUILDING INFORMATION MODELING COORDINATOR MUST BE WELL-EDUCATED IN NOT ONLY THE INDUSTRY IN WHICH THEY WORK BUT IN ARCHITECTURE GENERALLY AS WELL.



## ROLE OF BIM COORDINATOR

- BIM COORDINATOR NEEDS TO BE EXPERT IN MODELING AND SHOULD HAVE EXPERIENCE OF THE DESIGN STANDARDS, CODES, AND CALCULATIONS. COORDINATOR POSSESSES EXCELLENT COMMUNICATION SKILL AND COLLABORATIVE ABILITIES TO REVIEW DESIGN ISSUES OR MODEL CHANGES.
- THE ABILITY TO EXTRACT CLASH REPORTS AND UNDERSTAND THE DEPTH OF EACH CLASH NOT TO GET COMPROMISED WITH DESIGN QUALITY AND ENSURE THE MODEL IS ACCURATE AT ANY COST.

THE PROCESS SHOULD BE DETAILED AND COLLABORATED WITH ARCHITECTS, STRUCTURAL AND MEP ENGINEERS TO BE PRÉCISED. MORE THAN FOUR YEARS OF EXPERIENCE WOULD THE COORDINATOR NEED IN ANY COMPANY TO GET MAXIMUM OUTPUT OR PRODUCTIVITY.

